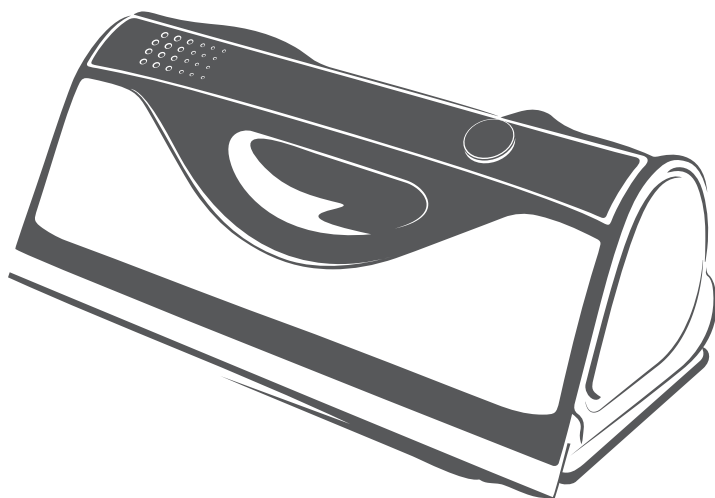


kobold

VORWERK

VG100+



User manual

EN • 26205-02 • 0823

Table of Contents

1	Before you start	3			
1.1	Storing of product documentation.....	3	8.6.3	Instructions for use	22
2	Product overview	4	8.7	Emptying the dirty water tank	23
3	Intended use.....	5	9	Storage	23
4	For your safety	6	10	Maintenance	24
4.1	Hazards and safety instructions.....	6	10.1	Spare parts and consumables	24
4.2	Classification of safety warning messages.....	12	10.2	Washing the cleaning cloth.....	24
4.3	Obligations of the user	12	10.3	Cleaning the rubber blade	25
5	Cleaning agents	13	10.4	Turning or replacing the rubber blade	25
5.1	Overview of cleaning agents...	13	11	Troubleshooting.....	26
5.2	Suitability of the cleaning agents for different surfaces...	13	12	Disposal.....	28
6	Cleaning cloths	15	12.1	Disposal of the device	28
6.1	Overview of cleaning cloths....	15	12.2	Information on the disposal of the batteries	28
6.2	Suitability of the cleaning cloths for different surfaces....	16	13	Warranty	29
7	Preparation	16	14	Service	29
7.1	Set-up location	16	15	Technical data.....	30
7.2	Charging the batteries.....	17	15.1	Manufacturer and Importer	30
7.3	Applying the cleaning cloth	17			
8	Operation.....	18			
8.1	Switching on the device	18			
8.2	Function display	18			
8.3	Switching off the window cleaner	18			
8.4	Filling the fresh water tank	18			
8.5	Inserting the water tank.....	20			
8.6	Cleaning surfaces	21			
8.6.1	Cleaning windows and glass surfaces.....	21			
8.6.2	Cleaning other smooth surfaces.....	22			

1 Before you start

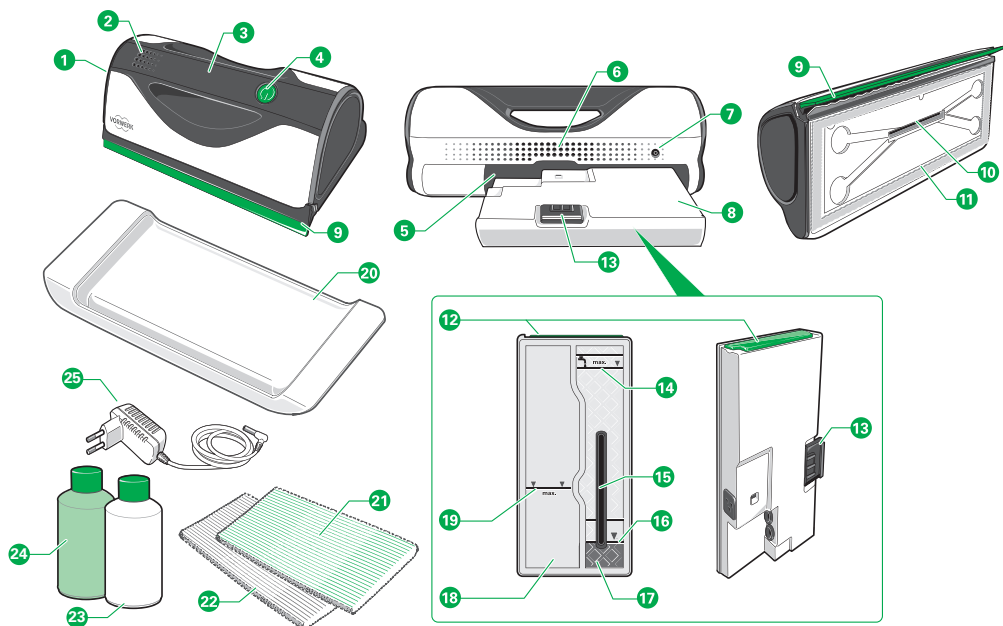
Congratulations on the purchase of your new Kobold device.

- Read the instruction manual carefully before using the device for the first time.

1.1 Storing of product documentation

- Retain this instruction manual for future reference. It is an important part of the appliance and must be kept with it if you pass it on to someone else.

2 Product overview



1	Kobold VG100+ surface cleaner	13	Locking/release button
2	LED function display	14	Fill level marking (max.)
3	Handle	15	Water outlet
4	On/off switch	16	Fill level marking (max.) for Kobold cleaning agent
5	Tank compartment	17	Fresh water tank
6	Ventilation opening	18	Dirty water tank
7	Charging socket	19	Marking (max.) for dirty water
8	Water tank, removable	20	Tray
9	Rubber blades	21	Kobold MF100 microfibre cloth
10	Water outlet	22	Kobold MF100soft soft fibre cloth
11	Hook-and-loop attachment for cleaning cloth	23	Kobold GC100 glass cleaning concentrate
12	Closure for dirty water tank and fresh water tank	24	Kobold DA100 descaling agent
		25	Mains charger

Type and range of accessories included may vary. Accessories can be purchased separately. The diagrams in this user manual are meant to illustrate the functions of the device and its accessories. The illustrations shown may differ from the actual product with respect to detail and proportions. Drawings of plugs are for illustrative purposes only. The actual product may vary depending on the country.

3 Intended use

Retain this document for future reference. It is an important part of the device and must be kept with it if you pass it on to someone else.

Use the device and accessories only for their intended purpose in order to prevent risks to you and other people and to prevent damage to the device or to other property and equipment.

The device is not intended to be used by children under 8 years of age. Cleaning and user maintenance should not be carried out by children under 8 years of age. This device is not intended to be used by persons (including children aged 8 years and above) with reduced physical, sensory or mental capabilities or lack of experience and knowledge unless they are supervised by a person responsible for their safety, or have been given instruction from this person concerning the safe use of the device and understand the hazards involved.

Children must not be allowed to play with the device or the chargers (including the cable and plug).

Cleaning and user maintenance must not be carried out by children aged 8 years and above without supervision.

Children must not use the device on open windows or in other situations where there is a risk of falling.

Risk of falling: Ensure that appropriate personal safety precautions are taken when using the surface cleaner (especially on open windows).

This appliance may only be used for its intended purpose. No other use is permitted. The manufacturer bears no responsibility for damages resulting from improper use. If the appliance is subject to technical modifications, the warranty and liability for material defects shall be rendered invalid. The manufacturer's obligation to compensate on the basis of product liability and/or the dealer's obligation to compensate for material defects shall no longer apply if technical modifications are made to the product.

When working with the device, please observe all the accompanying documentation as well as the device display. The manufacturer accepts no liability for damages resulting from improper use.

The device complies with the safety regulations of the country in which it has been sold by an authorised Vorwerk organisation. If the device is used in another country, compliance with the local safety standards cannot be guaranteed. Vorwerk therefore assumes no liability for any resulting safety risks for the user.

Kobold VG100+ surface cleaner

The Kobold VG100+ surface cleaner is intended exclusively for domestic use. Vorwerk assumes no liability in case of improper use or failure to observe the information in the user manual.

The Kobold VG100+ surface cleaner should only be used for the cleaning and care of dry, smooth, flat and untreated glass surfaces and surfaces above floor level. It is suitable for window glass, mirrors and glass conservatories, as well as smooth kitchen cabinet doors and drawer fronts, shower screens and wall tiles. For exact suitability, please refer to the overviews on the [cleaning agents \[▶ 13\]](#) and [cleaning cloths \[▶ 16\]](#) that are used with the Kobold VG100+ surface cleaner.

It is not suitable for uneven, rounded, arched, frosted or textured surfaces, e.g. car windscreens, frosted bathroom glass, glass with ornamentation or concrete surfaces. It is also not suitable for glass with special features (e.g. lotus effect) or special synthetic surfaces (e.g. monitors, televisions).

4 For your safety

Safety is an essential part of every Vorwerk product. However, product safety can only be assured if the device is used correctly and all safety instructions are followed.

4.1 Hazards and safety instructions



WARNING

Fire hazard!

The device may start to burn if exposed to heat or as a result of improper use.

- The cordless device and all its accessories (especially the battery pack) must never be put onto an open fire or heated by an external heat source.
- Stop using the device if it has fallen on the floor and shows visible signs of damage or appears to be defective.
- Do not short-circuit the battery pack under any circumstances.

Risk of fire or electric shock!

If incorrect repairs are performed on the device and the corresponding power supply, this may cause fire or electric shock.

- Never attempt to repair the device yourself.
- Repairs to electrical devices may only be carried out by a Vorwerk customer service centre, a workshop authorised by Vorwerk or a person with similar qualifications in order to avoid hazards.

Risk of electric shock!

Improper use of the device could cause an electric shock.

- Do not insert any sharp objects into the electrical contacts.
- Do not modify the electrical contacts.
- In the event of damage, contact Vorwerk customer service.

Risk of electric shock! Using a damaged mains charger or carrying out cleaning when the mains charger is still plugged in could cause an electric shock.

- Disconnect the mains charger from the power socket before cleaning.
- Stop using the mains charger if it is damaged.

Risk of fire or explosion! If burning or readily ignitable substances get inside the device, it could cause a fire or explosion.

- Never vacuum hot ash with the surface cleaner.
- Do not vacuum explosive or readily inflammable substances.
- Do not fill the fresh water tank with explosive or readily inflammable substances.

Fire hazard! The use of an incompatible charger can damage the battery and cause a fire.

- Only use the device with original Kobold accessories.
- To charge the battery/device, only use the removable power unit (charger/charging unit) that was supplied with the device.

Risk of electric shock! If water gets into the electrical components, you could get an electric shock.

- Never clean the mains charger with water or damp cleaning agents.
- Do not use the mains charger in damp environments.
- Do not touch the mains charger with wet hands.

Risk of electric shock! If repairs to the mains charger are not carried out correctly, it could cause an electric shock.

- Do not attempt to open the mains charger and repair it yourself. The mains charger has live parts inside and is not a serviceable component.

Risk of electric shock! Vacuuming liquids or readily inflammable substances can cause an electric shock.

- Never use the surface cleaner to vacuum other liquids or readily inflammable substances.

Risk of falling! While cleaning windows, you could fall and injure yourself.

- There is a risk of falling while cleaning windows. Ensure that you have adequate support.
- Protect yourself from falling during the cleaning process.

Risk to health if cleaning agent is used incorrectly!

The cleaning agent can be hazardous to health if it gets into the eyes or mouth.

- Store the cleaning agent out of the reach of children.
- Only use Kobold cleaning agent in a diluted form.
- Avoid contact with the eyes. In case of contact with the eyes, rinse thoroughly with water.
- Do not swallow the cleaning agent. If the cleaning agent is swallowed, seek medical advice.

Risk of injury if the surface cleaner is dropped!

If the device is dropped, it can cause serious injury.

- Ensure that the surface cleaner is not dropped during cleaning, endangering you and others.
- Take precautions to ensure the safety of yourself and others, should the surface cleaner fall (from an upper storey, for example).



CAUTION

Risk of injury when carrying out work on the device!

If the device is not switched off, you could injure yourself on individual components.

- Always switch the device off before all retrofitting, cleaning and maintenance work.

Risk of injury due to sharp fragments of plastic!

Broken plastic can have sharp edges and you could injure yourself.

- Do not use the device if plastic components have been damaged due to being knocked or dropped.
- Protect yourself from fragments with sharp edges.

Risk of contact with dangerous substances!

Leaked electrolyte from batteries and rechargeable batteries can cause injuries.

- Do not touch leaked electrolyte or electrolyte residues from leaking batteries or rechargeable batteries without skin or eye protection.
- Leaking electrolyte must not come into contact with skin, eyes or mucous membranes.
- In case of accidental contact, immediately wash your hands and flush the eyes or mucous membranes with plenty of clean water.
- Keep away from leaking electrolyte vapours and ensure that there is good ventilation.
- If irritation persists or the electrolyte has come into contact with the eyes or mucous membranes, seek medical advice.
- Clothing and textiles that have come into contact with leaked electrolyte or electrolyte residues must be thoroughly washed immediately or disposed of.
- Leaked electrolyte, electrolyte residues as well as leaking batteries and rechargeable batteries are flammable. Keep them away from fire and heat.

 **NOTICE**

Risk of damage to the device!

Moisture inside the device may damage it.

- Do not use the device in damp environments (e.g. outdoor areas) or in places where there is a risk that the device could come into contact with liquids.
- Never pour water over the device.
- Do not hold the device under running water.
- Never immerse the device in water or other liquids.
- Never clean your device with water or damp cleaning agents.
- Do not store the device outdoors.
- Store the device so that it is protected from damp.

Risk of damage from improper use!

If the device is not in perfect working order, it could cause damage.

- Only use the original Vorwerk products that are intended to be used with this device.
- Do not operate the device if the device itself or the power cord are damaged or if the device is not fully assembled.

Risk of damage from improper use!

Improper use of the device can damage it.

- To charge the device, only use the original mains charger supplied by Vorwerk in the scope of delivery.
- Only operate the mains charger with the alternating current voltage and mains frequency stated on the type plate.
- Only operate the mains charger on a connection that has been properly installed by a qualified electrician.
- Never carry the mains charger by the charging cable.
- Never remove the mains charger from the socket by pulling the charging cable.
- Do not leave the device unattended while it is running, and switch it off after every use.
- Do not block the air outlets during use under any circumstances.

Risk of damage to the battery!

Incorrect use of the battery could damage it.

- Do not attempt to remove the battery and replace it with other batteries.
- Fully charge the device at least once a year in order to prevent deep discharge, which can damage the battery.

Risk of damage to the battery!

Extreme heat or cold shortens the service life and/or can cause damage to the batteries.

- Do not expose the device to fire, heat, direct sunlight or excessive temperatures.
- Do not place the device near a heat source (oven, heater or hot radiator).
- Always comply with the ambient temperatures specified in the technical data for storage and operation.

Risk of damage from improper use!

The device can get damaged if it is used incorrectly to vacuum objects.

- Only use the surface cleaner to vacuum the surface that has been wetted with the cleaning solution.
- Do not use the surface cleaner as a vacuum cleaner for picking up solid particles such as crumbs.

Risk of damage from improper use!

Leaking water can damage delicate objects and surfaces.

- Pronounced dripping may occur if the surface cleaner is not used correctly. As a precaution, remove any items underneath the surfaces to be cleaned that could be damaged by water.
- Only use the surface cleaner with the water tank installed.

Risk of damage from incorrect cleaning!

Dirty or damaged cleaning cloths can damage the surface being cleaned.

- To avoid damage to the surfaces being cleaned, do not use cleaning cloths that are heavily soiled or contaminated with particles of dirt or grit.
- Thoroughly examine the cleaning cloth for contaminants prior to each use in order to prevent damage to the surface being cleaned.
- Remove any coarse dirt from the surface being cleaned before using the surface cleaner.
- Do not use fabric softener or similar substances to clean the cloth.
- Do not use bleach to clean the cloth.
- Wash the cleaning cloth at max. 60 °C.
- Allow the cleaning cloth to dry (it may also be dried in a tumble dryer).

Risk of damage to delicate surfaces!

Incorrect use can result in damage to surfaces.

- Check the suitability of the cleaning cloth on delicate surfaces before use.
- Only use a damp cleaning cloth with the surface cleaner, applying gentle pressure.
- Change the cloth promptly when dirty.
- Clean dark and highly polished surfaces with particular care, as scratches are more visible on these surfaces.
- Remove residues of the descaling agent with running water or a cloth.

Damage to the device!

Dirty water or residual moisture in the device can damage it.

- Rinse the dirty water tank with fresh water to prevent odours from developing and cleaning residues from drying on.
- Allow the tank to dry to prevent the development of mould.
- Store the device in a dry place after use and remove the liquid from the tray.

Risk of damage from unsuitable cleaning agents!


Damage to the device cannot be ruled out if incompatible cleaning agents are used.

- Only use the Kobold cleaning agents designed for this device for their intended purpose.

4.2 Classification of safety warning messages

The safety warning messages in this manual are highlighted by safety symbols and signal words. The symbol and signal word indicate the severity of the potential hazard.



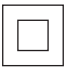



Classification of safety warning messages The safety warning messages that precede each action are shown as follows:

WARNING	
	<p>Type and source of hazard</p> <p>Explanation of type and source of hazard/consequences</p> <ul style="list-style-type: none"> Measures to prevent hazard

Meaning of signal words

WARNING	Risk of death or serious injury if hazard is not avoided.
CAUTION	Risk of minor injury if hazard is not avoided.
NOTICE	Material damage if hazard is not avoided.

Meaning of safety symbols

	Safety warning message indicating the severity of the potential hazard		Reference to damage to property or equipment		Device of protection class II
	Indoor use only		Read manual before charging		
	To charge the battery/device, only use the removable power unit (charger/charging unit) that was supplied with the device.				

4.3 Obligations of the user

To ensure that your device and the Vorwerk accessories operate correctly, please follow the guidelines below:

1. Follow the instructions in the manual and all accompanying documentation.
2. Keep the manual in a place where it can be easily accessed, should you need to refer to it.
3. Ensure that any damage to the device is repaired without delay by the manufacturer.

5 Cleaning agents

Before use Test the surface suitability of both cleaning agents in an inconspicuous area before use.

WARNING



Risk to health if cleaning agent is used incorrectly!

The cleaning agent can be hazardous to health if it gets into the eyes or mouth.

- Store the cleaning agent out of the reach of children.
- Only use Kobold cleaning agent in a diluted form.
- Avoid contact with the eyes. In case of contact with the eyes, rinse thoroughly with water.
- Do not swallow the cleaning agent. If the cleaning agent is swallowed, seek medical advice.

5.1 Overview of cleaning agents

Select the Kobold GC100 glass cleaning concentrate or the Kobold DA100 descaling agent based on the uses described below, and pour the selected cleaning agent into the tank no further than the max. marking.

Kobold GC100 glass cleaning concentrate



The glass cleaning concentrate is specially developed for cleaning glass surfaces. It is also suitable for surfaces in the kitchen above floor level. For exact suitability, please refer to the table under [Suitability of the cleaning agents for different surfaces](#) [▶ 13].

Kobold DA100 descaling agent







The descaling agent is a special cleaner for surfaces that are **not sensitive to acid**. The descaling agent is suitable for removing limescale deposits in bathrooms (e.g. on shower screens or tiled walls) and soap residue. For exact suitability, please refer to the table under [Suitability of the cleaning agents for different surfaces](#) [▶ 13].

5.2 Suitability of the cleaning agents for different surfaces

Before use Test the surface suitability of both cleaning agents in an inconspicuous area before use.

Surface type	Kobold GC100 glass cleaning concentrate	Kobold DA100 descaling agent*
Windows, mirrors	+	+



	Surface type	Kobold GC100 glass cleaning concentrate	Kobold DA100 descaling agent*
	Glazed ceramic tiles and fine stoneware	o	o
	Kitchen cabinet doors and drawer fronts, highly polished surfaces	o	o
	Shower doors	+	+
	Stainless steel	o	o
	Marble, terrazzo, travertine, granite, natural stone	-	-
	Steel, copper, aluminium	-	-
	Untreated wood	-	-
	Concrete	-	-

+ very good suitability

o suitable

- not suitable

* do not use on materials that are sensitive to acid (e.g. seals, marble)

6 Cleaning cloths

Before use Test the surface suitability of both cleaning cloths in an inconspicuous area before use.

6.1 Overview of cleaning cloths

There are two types of cleaning cloth:

Kobold MF100 microfibre cloth



The microfibre cloth is suitable for windows, mirrors, shower screens and wall tiles.

Kobold MF100soft soft fibre cloth








The soft fibre cloth is suitable in instances where manufacturers advise against microfibre (e.g. kitchen cabinet doors and drawer fronts or similar surfaces) and for removing dried-on marks, such as gravy.



Type and number of cleaning clothes included may vary.

For best results, we recommend washing the cleaning cloths in the washing machine before first use and after every subsequent use, see [Washing cleaning cloths \[▶ 24\]](#).

6.2 Suitability of the cleaning cloths for different surfaces

	Surface type	Kobold MF100 microfibre cloth*	Kobold MF100soft soft fibre cloth*
	Windows, mirrors	+	o
	Glazed ceramic tiles and fine stoneware	+	o
	Kitchen cabinet doors and drawer fronts, highly polished surfaces	-	+
	Shower doors	+	o
	Stainless steel	o	o
	Marble, terrazzo, travertine, granite, natural stone	o	o
	Steel, copper, aluminium	o	o
	Untreated wood	o	o
	Concrete	-	-

+ very good suitability

o suitable

- not suitable

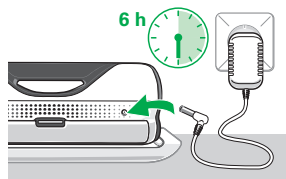
* only use wet

7 Preparation

7.1 Set-up location

Before you begin charging the batteries, ensure that the surface cleaner is centred on the tray and the rubber blade sits in the designated recess, as the rubber blade can become damaged if distorted.

7.2 Charging the batteries

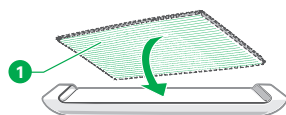


The batteries have to be fully charged prior to first use. This process takes about six hours.

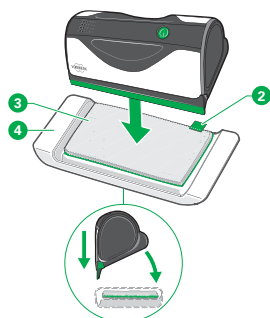
1. Connect the mains charger to the power supply.
2. Note the prescribed voltage of 220 V - 240 V.
3. Connect the mains charger to the charging socket on the surface cleaner.
4. Ensure that the plug is fully inserted.

During the charging process, the charge level indicator pulsates according to the current charge level. The display is divided into three charge levels (see [Function display](#) [▶ 18]).

7.3 Applying the cleaning cloth

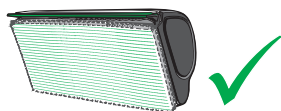


1. Select a suitable [cleaning cloth](#) [▶ 15].
2. Lay the [washed cleaning cloth](#) [▶ 24], cleaning side down (1), onto the tray so that it is flush with the edges of the tray.
3. Fold the green label (2) backwards so that it is located outside the contact surface.



4. Place the surface cleaner onto the cleaning cloth (3). First, hold the device so that it is tilted with the back edge against the rear edge of the tray.
5. Then tip the surface cleaner forward until the rubber blade is positioned in the recess of the tray (4).

6. Lift up the surface cleaner and check that the cleaning cloth is straight and flush with the edges of the device. The rubber blade must not be covered by the cleaning cloth. Make sure that the surface cleaner sits fully in the tray with the cleaning cloth to allow for an even distribution of liquid.

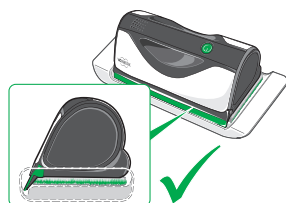


7. Always position the surface cleaner in the centre of the designated area on the tray.

8. Ensure that the cleaning cloth is correctly applied.

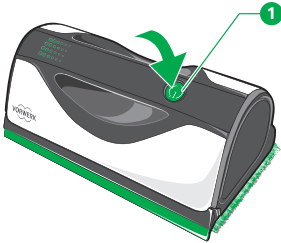
9. The rubber blade should project into the recess provided.

If the surface cleaner is stowed incorrectly for a long period of time, the rubber blade could get damaged.



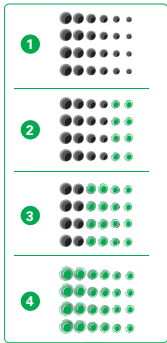
8 Operation

8.1 Switching on the device



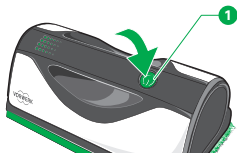
- Press the on/off switch (1) to switch on the surface cleaner. The function display comes on according to the battery charge level (see [Function display](#) [▶ 18]).

8.2 Function display



	Function display	Status
1	Function display off	Switched off
	Function display off (with mains charger connected)	Charging process complete, batteries fully charged
	No LEDs light up after pressing the on/off switch (function display off)	No battery output, battery is empty
2	The two right-hand LED rows are lit up	Low battery charge level
3	Central and right-hand LED rows are lit up	Medium battery charge level
4	Function display on	Switched on
	Brief, rapid flashing upon pressing the on/off switch	Battery charge level too low, please charge batteries
1, 2, 3, 4	Function display pulsating	Charging in progress

8.3 Switching off the window cleaner



- Press the on/off switch (1) to switch off the surface cleaner. The function display turns off.

8.4 Filling the fresh water tank

Only operate the device with the specified Kobold [cleaning agents](#) [▶ 13] to achieve streak-free results. Under no circumstances should you use a different quantity of cleaning agent to the quantity

described in this user manual.

Select the cleaning agent that is appropriate for the **surface to be cleaned** [▶ 13].

The surface cleaner is suitable for use with the Kobold GC100 glass cleaning concentrate and Kobold DA100 descaling agent from Vorwerk. Both cleaning agents are designed for the device. Other cleaning agents can damage the device.

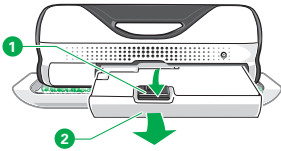
WARNING



Risk to health if cleaning agent is used incorrectly!

The cleaning agent can be hazardous to health if it gets into the eyes or mouth.

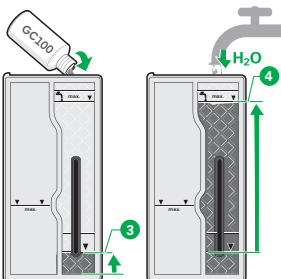
- Store the cleaning agent out of the reach of children.
- Only use Kobold cleaning agent in a diluted form.
- Avoid contact with the eyes. In case of contact with the eyes, rinse thoroughly with water.
- Do not swallow the cleaning agent. If the cleaning agent is swallowed, seek medical advice.



1. Press and hold the release button on the back of the surface cleaner (1).
2. Pull the tank all the way out (2).
3. Rotate the tank so that both openings are facing upwards.

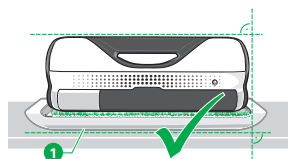


4. Open the fresh water tank by pulling the green rubber closure upwards.
5. Select a suitable [▶ 13] cleaning agent.



6. First, pour the specified amount of the selected Kobold cleaning agent into the tank, as indicated by the fill level marking (approx. 5ml) (3). To do this, place the opening of the bottle onto the spout of the fresh water tank.
7. Please observe the maximum fill level marking for the correct quantity of Kobold cleaning agent (3).
8. Then fill the tank up with water. Once again, please observe the maximum allowable fill level (4).
9. Finally, seal the tank with the rubber closure and turn the sealed tank opening upside down a few times to distribute the Kobold cleaning agent more evenly.

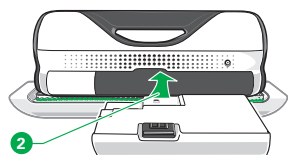
8.5 Inserting the water tank



After filling the fresh water tank with cleaning solution (Kobold cleaning agent and fresh water) or after emptying the dirty water tank, you will need to insert the tank into the surface cleaner again.

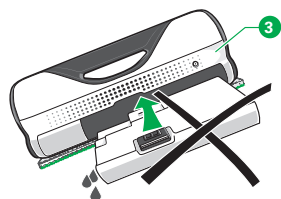
With the tank filled, you must first attach the cleaning cloth, as the tank will empty after being inserted.

1. Attach the cleaning cloth to the surface cleaner (see [Applying the cleaning cloth](#) [▶ 17]) and check that the cleaning cloth is correctly attached before inserting the tank.
2. Place the surface cleaner, with the cleaning cloth attached, horizontally onto the tray so that the rubber blade sits in the recess of the tray (1).

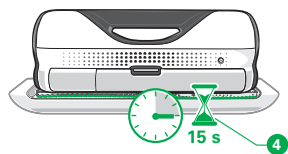


3. Insert the tank into its compartment (2). To do this, slide the tank into the surface cleaner along the guide until the locking/release button clicks into place.

The tank will empty as soon as it locks into place inside the compartment, and the cleaning solution that is released will be distributed onto the cleaning cloth.



4. Place the surface cleaner horizontally onto the tray when inserting the tank. Do not hold it vertically or at an angle (3), otherwise it will start dripping heavily and the cleaning cloth will not be fully saturated with cleaning solution.



5. After inserting the tank, wait at least 15 seconds (4). The surface cleaner must be left in a horizontal position on the tray during this time. Otherwise, there will not be an even distribution of the cleaning solution on the cleaning cloth.

At the end of the 15 seconds, the cleaning cloth will be saturated with the cleaning solution and ready for use.

8.6 Cleaning surfaces

8.6.1 Cleaning windows and glass surfaces

WARNING



Risk of injury if the surface cleaner is dropped!

If the device is dropped, it can cause serious injury.

- Ensure that the surface cleaner is not dropped during cleaning, endangering you and others.
- Take precautions to ensure the safety of yourself and others, should the surface cleaner fall (from an upper storey, for example).

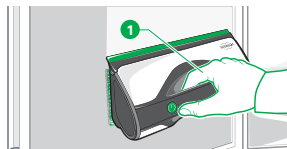
WARNING



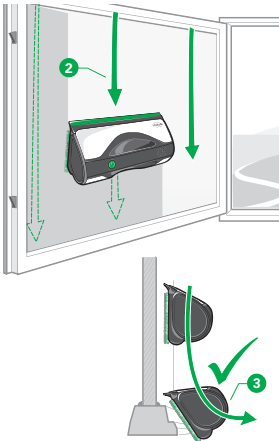
Risk of falling!

While cleaning windows, you could fall and injure yourself.

- There is a risk of falling while cleaning windows. Ensure that you have adequate support.
- Protect yourself from falling during the cleaning process.



1. Remove any coarse dirt from the surface being cleaned before using the surface cleaner.
2. As a precaution, remove any water-sensitive items underneath the surfaces to be cleaned, as pronounced dripping may occur if the surface cleaner is not used correctly.
3. Hold the surface cleaner by the handle (1).
4. Switch on the surface cleaner.
5. Position the surface cleaner in the top corner of the window.



6. Applying slight pressure, slowly guide the surface cleaner in straight lines all the way down to the bottom edge of the window (2).
Please note: you must guide the rubber blade all the way down to the bottom of the glass pane and then pull it away from the window with a slight tilting motion (3). This is the only way to completely clean the surface and remove all the water.
7. Continue cleaning as described (moving across to the left or right) until the window pane is completely cleaned.

8.6.2 Cleaning other smooth surfaces

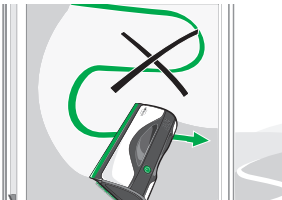
You can use the surface cleaner to clean other smooth surfaces in addition to windows and glass. You apply exactly the same method as with [cleaning windows](#) [▶ 22].

8.6.3 Instructions for use

Avoid meandering movements while cleaning, as this will adversely affect the quality of the clean.

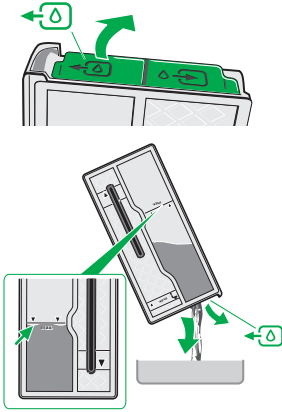
We recommend regularly cleaning the sealing blades with a cloth.

If you notice a deterioration in cleaning quality, it is likely that the Kobold cleaning agent and water are used up, the cleaning cloth is dirty and/or the rubber blade is extremely dirty. An incomplete clean and/or inadequate wetting of the window pane during cleaning are indications of a deterioration in cleaning quality.



8.7 Emptying the dirty water tank

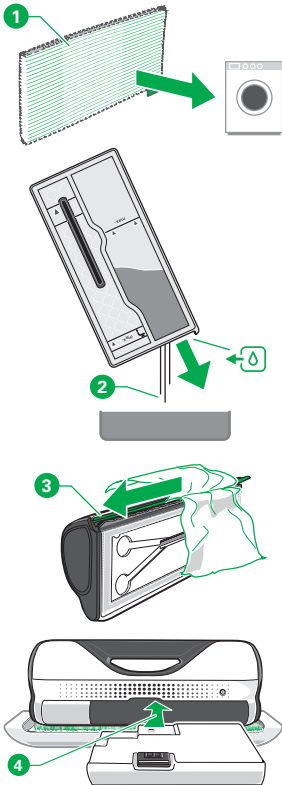
The dirty water tank must be emptied when the maximum fill level is reached. Empty the dirty water tank every time the tank is removed.



1. Remove the tank as described in the section [Filling the fresh water tank](#) [▶ 18].
2. Rotate the tank so that both openings are facing upwards.
3. Open the tank by pulling the green rubber closure upwards.
4. Pour out the dirty water.
5. Rinse the dirty water tank with fresh water and empty the tank again.
6. Close the dirty water tank again with the cap provided before the next use and allow it to dry on the inside prior to storage.

9 Storage

Store your surface cleaner correctly and remove any dirt after each use.



1. Remove, wash and dry the cleaning cloth (1). It is easily removed by taking hold of the green label.
2. Remove the tank as described in the section [Filling the fresh water tank](#) [▶ 18].
3. Empty the dirty water from the tank (2).
4. Rinse the dirty water tank with fresh water to prevent odours from developing and cleaning residues from drying on.
5. Allow the tank to dry to prevent the development of mould.
6. Clean the rubber blade (3) (see [Cleaning the rubber blade](#) [▶ 25]).
7. Attach the cleaning cloth to the surface cleaner again once it is completely dry.
8. Insert the tank into the surface cleaner (4) once it is completely dry.
9. Place the surface cleaner on the tray for storage. Make sure that the tray and cleaning cloth are completely dry and that there is no residue on the tray. Also check that the rubber blade sits in the designated recess.

10. For optimum battery storage, do not connect the surface cleaner to the power using the mains charger while in storage.



10 Maintenance

10.1 Spare parts and consumables

We recommend you take advantage of our reorder options for original care products and original consumables in good time. For more information on the reorder options, see [customer service](#) [▶ 29].

10.2 Washing the cleaning cloth

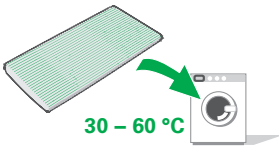
NOTICE



Risk of damage from incorrect cleaning!

Dirty or damaged cleaning cloths can damage the surface being cleaned.

- To avoid damage to the surfaces being cleaned, do not use cleaning cloths that are heavily soiled or contaminated with particles of dirt or grit.
- Thoroughly examine the cleaning cloth for contaminants prior to each use in order to prevent damage to the surface being cleaned.
- Remove any coarse dirt from the surface being cleaned before using the surface cleaner.
- Do not use fabric softener or similar substances to clean the cloth.
- Do not use bleach to clean the cloth.
- Wash the cleaning cloth at max. 60 °C.
- Allow the cleaning cloth to dry (it may also be dried in a tumble dryer).

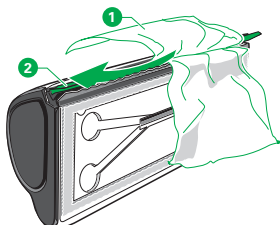


Clean the cleaning cloth at regular intervals.

1. Wash the cleaning cloth **without fabric softener and without bleach** in the washing machine at max. 60 °C.
2. Allow the cleaning cloth to dry (it may also be dried in a tumble dryer).



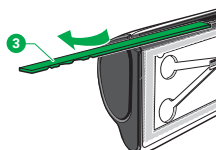
10.3 Cleaning the rubber blade



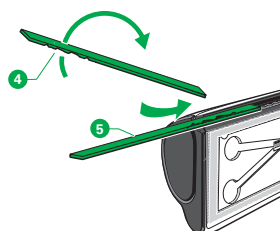
In the course of using the surface cleaner, dirt particles can collect on the rubber blade and in between the green upper rubber blade and the black lower blade.

1. Pull the two blades apart.
2. Wipe the rubber blade with a damp, lint-free cloth (1).
3. Remove any dirt from the area between the blades (2).

10.4 Turning or replacing the rubber blade



The rubber blade can become damaged from hard, sharp particles of dirt or other mechanical stresses during the cleaning process. This can lead to streaking or smearing. If this happens, you can turn the green rubber blade over and continue using the other side if it is undamaged. If that is not possible, you will need to have the rubber blade replaced.



1. Pull the green, damaged rubber blade sideways out of its mounting groove (3).
2. Clean the rubber blade (see [Cleaning the rubber blade \[▶ 25\]](#)) and check to see whether there are signs of damage.
3. The rubber blade can be used on both sides. Turn the rubber blade over if one side is damaged (4).
4. Insert the rubber blade back into the mounting groove so that the undamaged side of the rubber blade is available for cleaning (5).
5. If the rubber blade shows severe mechanical damage on both sides, you will have to replace it with a new one. Please contact customer service for a replacement.

11 Troubleshooting

WARNING



Risk of fire or electric shock!

If repairs to the device and the corresponding power supply unit are not carried out correctly, it could result in fire or electric shock.

- Never attempt to repair the device yourself.
- Repairs to electrical devices may only be carried out by a Vorwerk customer service centre, a workshop authorised by Vorwerk or a person with similar qualifications in order to avoid hazards.

Fault	Possible cause and rectification
The surface cleaner cannot be switched on	<p>The batteries may be empty.</p> <ul style="list-style-type: none">– Charge the surface cleaner. <p>The surface cleaner was not charged correctly.</p> <ul style="list-style-type: none">– Ensure that the mains charger is connected to the surface cleaner and the power socket. (The function display pulsates to show that the surface cleaner is charging.) <p>The contact points on the connecting socket of the surface cleaner may be dirty.</p> <ul style="list-style-type: none">– Clean the contact points with a dry cloth. <p>The surface cleaner may have been switched on during the charging process.</p> <ul style="list-style-type: none">– Ensure that the surface cleaner is switched off while charging.
Poor cleaning results	<p>The opening between the rubber blades is blocked/dirty.</p> <ul style="list-style-type: none">– Clean the area between the rubber blades. <p>Smearing and streaking during the cleaning process.</p> <ul style="list-style-type: none">– Clean the rubber blade.– Pull the rubber blade out from the side.– Carry out a visual inspection for possible damage.– Turn the rubber blade over if damage can only be seen on one side.– Re-insert the rubber blade and use the undamaged side.– Replace the rubber blade if it shows signs of damage on both sides. <p>The cleaning cloth has to be replaced.</p> <ul style="list-style-type: none">– Change the cleaning cloth. <p>The dirty water tank has to be emptied.</p> <ul style="list-style-type: none">– Remove and empty the dirty water tank.

Fault	Possible cause and rectification
	<p>The cleaning solution has been used up.</p> <ul style="list-style-type: none"> - Fill the fresh water tank with Kobold cleaning agent and fresh water. - Attach the cleaning cloth to the surface cleaner. - Place the surface cleaner in a horizontal position on the tray. - Insert the fresh water tank into the surface cleaner. <p>The quantity of Kobold cleaning agent is not correct.</p> <ul style="list-style-type: none"> - Add the specified quantity of Kobold cleaning agent. Observe the fill level marking for the Kobold cleaning agent on the fresh water tank. <p>The water outlet on the underside of the surface cleaner is blocked.</p> <ul style="list-style-type: none"> - Remove any obstructions from the opening.
Water is leaking	<p>The openings on the water tank are not properly sealed.</p> <ul style="list-style-type: none"> - Check whether the rubber closures on the fresh and/or dirty water tank are correctly fitted. <p>The surface cleaner is/was being tilted or held vertically while the tank is/was being inserted.</p> <ul style="list-style-type: none"> - Position the surface cleaner horizontally on the tray while inserting the tank. <p>The dirty water tank is full.</p> <ul style="list-style-type: none"> - Empty the dirty water tank. <p>The water tank is not correctly locked into place.</p> <ul style="list-style-type: none"> - The locking/release button must engage audibly (with a click).
Cleaning quality is deteriorating	<p>Follow the steps below to restore cleaning quality:</p> <ul style="list-style-type: none"> - Clean or change the rubber blade (see Cleaning the rubber blade [▶ 25] and Turning or replacing the rubber blade [▶ 25]). - Change the cleaning cloth (see Applying the cleaning cloth [▶ 17]). - Remove the tank to empty the dirty water. - Fill the tank with Kobold cleaning agent and water (see Filling the fresh water tank [▶ 18]). - Place the surface cleaner in a horizontal position on the tray. - Insert the tank back into the surface cleaner (see Inserting the water tank [▶ 20]) to moisten the cleaning cloth again.
	<p>If the fault cannot be rectified, please contact Vorwerk customer service (see Service [▶ 29]).</p>

12 Disposal

12.1 Disposal of the device



This symbol means that electrical and electronic appliances may not be disposed of in household waste. You can return your old electrical appliances to a municipal collection point free of charge.

12.2 Information on the disposal of the batteries

The following information is intended for the disposal company and not for you as the user.

The integrated lithium-ion batteries contain substances that can be harmful to the environment. Before scrapping the device, the batteries must be removed and taken to a battery collection centre.

- Only remove the batteries when they are fully discharged. The batteries must not come into contact with metal under any circumstances.

CAUTION



Risk of contact with dangerous substances!

Leaked electrolyte from batteries and rechargeable batteries can cause injuries.

- Do not touch leaked electrolyte or electrolyte residues from leaking batteries or rechargeable batteries without skin or eye protection.
- Leaking electrolyte must not come into contact with skin, eyes or mucous membranes.
- In case of accidental contact, immediately wash your hands and flush the eyes or mucous membranes with plenty of clean water.
- Keep away from leaking electrolyte vapours and ensure that there is good ventilation.
- If irritation persists or the electrolyte has come into contact with the eyes or mucous membranes, seek medical advice.
- Clothing and textiles that have come into contact with leaked electrolyte or electrolyte residues must be thoroughly washed immediately or disposed of.
- Leaked electrolyte, electrolyte residues as well as leaking batteries and rechargeable batteries are flammable. Keep them away from fire and heat.

Removing the batteries from the device

1. Disconnect the surface cleaner from the mains charger.
2. Allow the motor on the surface cleaner to run until it stops.

3. Check whether the batteries are fully discharged by attempting to switch the surface cleaner back on.
If the motor starts, repeat the process.
4. Open the surface cleaner and remove the cover.
5. Remove the screws.
6. Remove the side cover and hood so that the batteries are freely accessible.
7. Disconnect each connecting wire individually and take out the batteries.

13 Warranty

Any warranty services can be found in the order note or purchase contract.

14 Service

For more information, please speak to our UK & Ireland Customer Care team, either by calling +44 330 6600 834 (Monday to Friday 09:00 – 17:00) or sending an email to info@vorwerk.co.uk.

15 Technical data

Kobold VG100+ surface cleaner

Safety symbols



Housing	High-quality, recyclable, thermoformed plastic
Motor	Maintenance-free DC motor at approx. 18,000 rpm
Input voltage, mains charger	110 – 240 volts alternating current 50/60 Hertz
Output voltage, mains charger	10.8 V DC
Mains charger type	S006BAV1080050
Nominal motor output	approx. 30 watts
Weight	990 g (without mains charger, without cleaning solution)
Dimensions	Length: 290 mm Width: 140 mm Height: 110 mm
Noise emission	74 dB(A) (measured under free-field conditions)
Battery pack	Lithium ion
Battery running time	approx. 30 minutes
Ambient temperature for operation	10 °C – 35 °C
Ambient temperature for storage	5 °C – 35 °C
Charge time	approx. 6 hours
Charger	
Output current	max. 0.5 A
Output power	max. 5.4 W
Average efficiency rate	79.60 %
Efficiency at low load (10 %)	68.01 %
Power consumption without load	0.063 W

15.1 Manufacturer and Importer

Manufacturer

Vorwerk Elektrowerke GmbH & Co. KG
Mühlenweg 17-37
42270 Wuppertal
Germany

Importer

Vorwerk UK Limited
Ashurst Manor

Church Lane

Ascot

SL5 7DD

kobold



VG100+