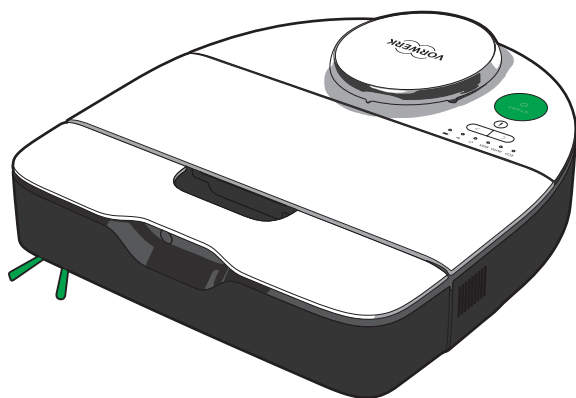


kobold

VR7



User manual

EN • 27095-05 • 0524

Contents

| | | | | | |
|----------|---|-----------|-----------|---|-----------|
| 1 | Before you start | 4 | 10 | Function overview | 28 |
| 2 | Product overview | 5 | 10.1 | Operator panel overview | 28 |
| 2.1 | Kobold VR7 robot vacuum cleaner | 5 | 10.2 | LED displays..... | 29 |
| 2.2 | Charging options | 7 | 10.2.1 | Overview of LED displays | 29 |
| 2.2.1 | Kobold CB7 solo charging station | 7 | 10.2.2 | Status of the robot vacuum cleaner | 30 |
| 2.2.2 | Kobold RB7 emptying & charging station..... | 7 | 10.2.3 | Battery status | 31 |
| 3 | Intended use..... | 8 | 10.3 | Voice response..... | 31 |
| 4 | For Your Safety | 9 | 11 | Operation | 33 |
| 4.1 | Hazards and safety instructions..... | 10 | 11.1 | Switching on | 33 |
| 4.2 | Classification of safety warning messages..... | 19 | 11.2 | Starting cleaning | 33 |
| 4.3 | Obligations of the user | 19 | 11.3 | Selecting a cleaning mode | 33 |
| 5 | Suitability for different types of floors | 20 | 11.3.1 | MAX mode | 34 |
| 6 | Assembly | 21 | 11.3.2 | AUTO mode..... | 34 |
| 7 | Getting the charging station ready for use..... | 22 | 11.3.3 | ECO mode | 34 |
| 7.1 | Removing the protective film . | 22 | 11.4 | Pausing | 35 |
| 7.2 | Choosing a setup location | 22 | 11.5 | Starting cleaning on a low battery..... | 35 |
| 7.3 | Connecting the mains cable ... | 23 | 11.6 | Cancelling cleaning | 35 |
| 8 | Preparing your household..... | 25 | 11.7 | Returning the robot vacuum cleaner to the charging station | 36 |
| 9 | Putting into operation for the first time | 25 | 11.8 | Standby mode | 37 |
| 9.1 | Charging for the first time | 25 | 11.9 | Switching off the robot vacuum cleaner | 37 |
| 9.1.1 | Charging on the emptying & charging station..... | 26 | 12 | Information on the robot's operating method | 38 |
| 9.1.2 | Charging on the solo charging station | 26 | 12.1 | General cleaning pattern of the robot vacuum cleaner..... | 38 |
| 9.2 | Installing the MyKobold app and pairing your robot vacuum cleaner | 27 | 12.2 | Cleaning area and navigation of the robot vacuum cleaner .. | 38 |
| | | | 12.2.1 | Climbing over objects | 39 |
| | | | 12.3 | Charging process of the robot vacuum cleaner | 39 |
| | | | 12.3.1 | Automatic charging..... | 39 |

| | | | | | |
|-----------|--|-----------|-----------|--|-----------|
| 12.3.2 | Manual charging | 40 | 17.2.12 | Removing or changing the battery..... | 53 |
| 13 | Wi-Fi and app control using smart devices*..... | 41 | 17.3 | Maintenance of the emptying & charging station | 54 |
| 13.1 | Technical requirements | 41 | 17.3.1 | Opening and closing the filter cover..... | 54 |
| 13.2 | Establishing a Wi-Fi Connection | 42 | 17.3.2 | Inserting and changing the premium filter bag..... | 55 |
| 13.3 | Deleting Wi-Fi settings..... | 42 | 17.3.3 | Cleaning the emptying & charging station..... | 56 |
| 14 | Resetting | 43 | 17.3.4 | Removing, cleaning and inserting the motor protection filter..... | 57 |
| 14.1 | Resetting the robot vacuum cleaner to factory settings | 43 | 17.3.5 | Removing and replacing the fragrance chip..... | 58 |
| 14.2 | Deleting a MyKobold account. | 43 | 18 | Software update..... | 59 |
| 15 | Pairing the emptying & charging station with the dual battery charger | 44 | 19 | Troubleshooting..... | 60 |
| 16 | Transportation | 45 | 19.1 | Faults..... | 60 |
| 17 | Maintenance | 46 | 19.2 | Emptying & charging station .. | 63 |
| 17.1 | Spare parts and consumables | 46 | 20 | Disposal and environmental protection..... | 65 |
| 17.2 | Maintenance of your robot vacuum cleaner | 46 | 20.1 | Disposal of the device | 65 |
| 17.2.1 | Regular cleaning of the robot vacuum cleaner | 46 | 20.2 | Disposal of batteries..... | 65 |
| 17.2.2 | Emptying the dust container manually | 47 | 20.3 | Disposal of premium filter bags and robot vacuum cleaner filters | 65 |
| 17.2.3 | Cleaning the rear suction channel | 47 | 20.4 | Disposal of the packaging..... | 65 |
| 17.2.4 | Cleaning the filter | 48 | 21 | Warranty | 66 |
| 17.2.5 | Replacing the filter | 48 | 22 | Service | 66 |
| 17.2.6 | Removing and replacing fragrance chips..... | 49 | 23 | Technical Data | 67 |
| 17.2.7 | Removing, cleaning and inserting the motor protection filter | 49 | 23.1 | Robot vacuum cleaner | 67 |
| 17.2.8 | Reinstalling the dust container and filter..... | 51 | 23.2 | Solo charging station | 68 |
| 17.2.9 | Cleaning the side brush..... | 51 | 23.3 | Emptying & charging station .. | 68 |
| 17.2.10 | Cleaning the roller brush | 52 | 23.4 | Manufacturer and Importer | 69 |
| 17.2.11 | Cleaning the sensors | 53 | 24 | Declaration of Conformity..... | 69 |

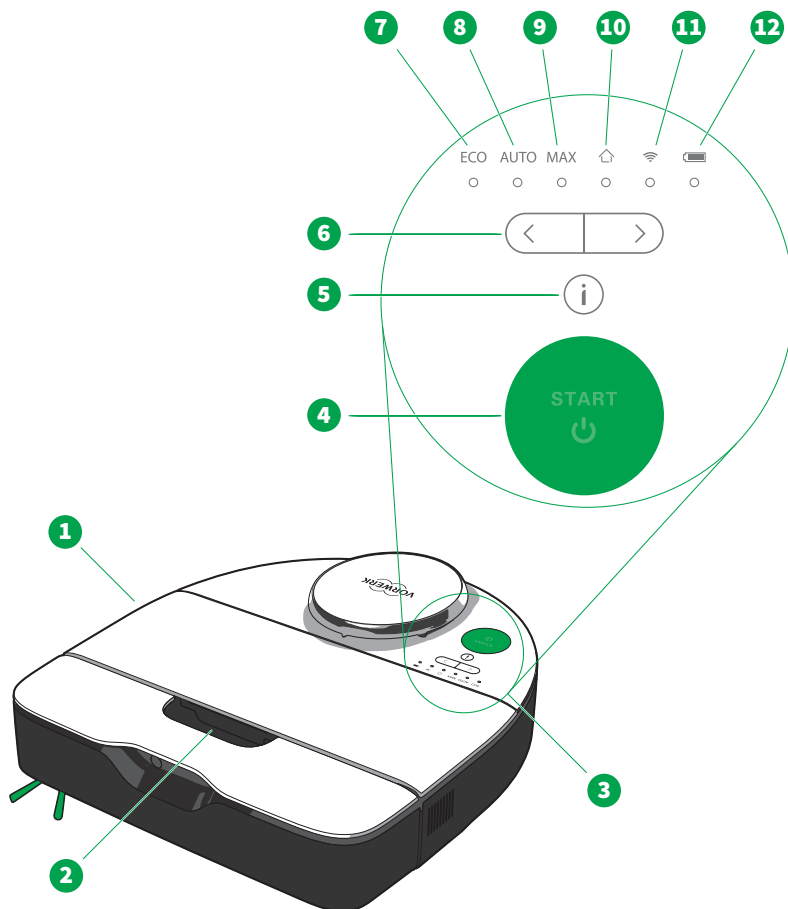
1 Before you start

Congratulations on the purchase of your new Kobold device.

1. Read the instruction manual carefully before using the device and accessories for the first time.
2. Follow the detailed instructions for use in the following chapters.

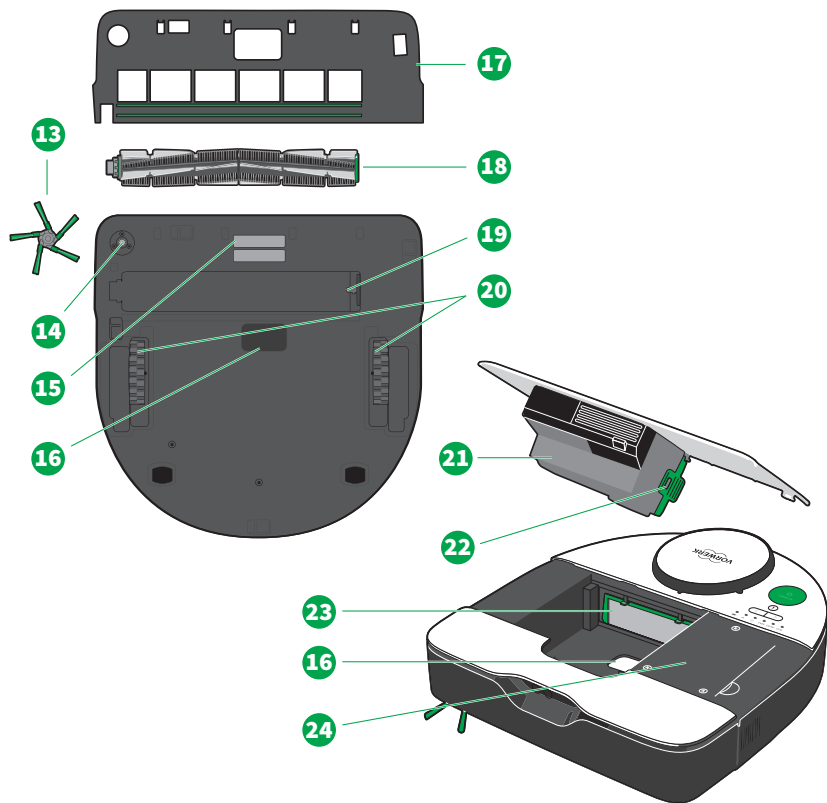
2 Product overview

2.1 Kobold VR7 robot vacuum cleaner



Overview of the Kobold VR7 robot vacuum cleaner and operating controls

| | |
|---|----------------|
| 1 Kobold VR7 robot vacuum cleaner | 7 ECO LED |
| 2 Recessed grip for carrying and opening the device | 8 AUTO LED |
| 3 Operator panel with START button, selection keys and LED displays | 9 MAX LED |
| 4 START button (switching on and off) | 10 HOME LED |
| 5 Information button | 11 Wi-Fi LED |
| 6 Selection keys, left and right | 12 Battery LED |



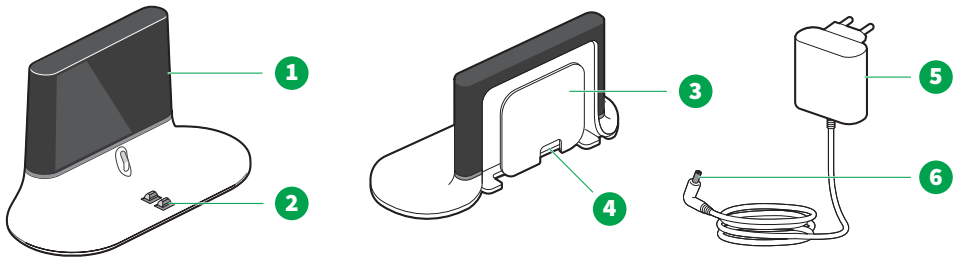
Overview of the Kobold VR7 robot vacuum cleaner and components

| | |
|----------------------|---|
| 13 Side brush | 19 Roller brush holder |
| 14 Side brush holder | 20 Wheels |
| 15 Charging contacts | 21 Cover with dust container including filter |
| 16 Suction opening | 22 Filter on the robot vacuum cleaner |
| 17 Brush cover | 23 Motor protection filter |
| 18 Roller brush | 24 Battery compartment |

Type and range of accessories included may vary. Accessories can be purchased separately. The diagrams in this instruction manual are meant to illustrate the functions of the device and its accessories. The illustrations shown may differ from the actual product with respect to detail and proportions. Drawings of plugs are for illustrative purposes only. The actual product may vary depending on the country.

2.2 Charging options

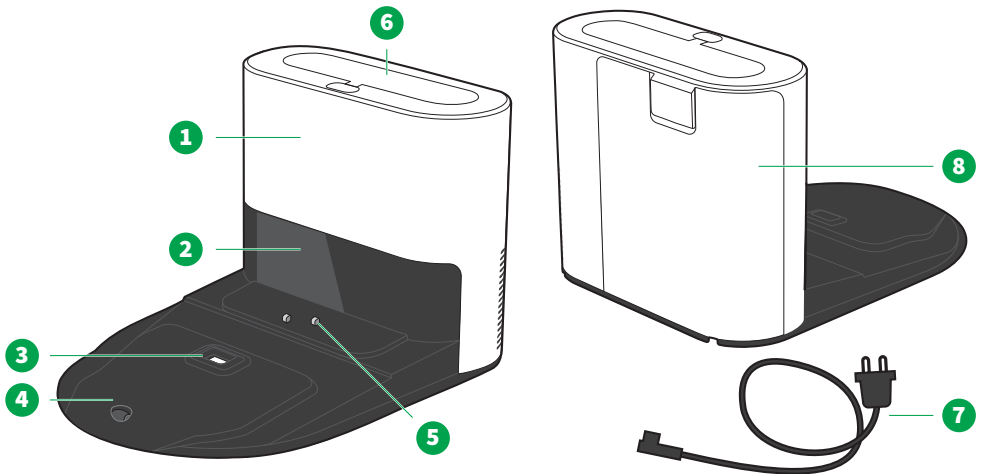
2.2.1 Kobold CB7 solo charging station



Overview of the Kobold CB7 solo charging station

| | | | |
|---|--|---|---------------|
| 1 | Infrared window | 4 | Cable outlet |
| 2 | Charging contacts for the robot vacuum cleaner | 5 | Mains plug |
| 3 | Cable holder | 6 | Charging plug |

2.2.2 Kobold RB7 emptying & charging station



Overview of the Kobold RB7 emptying & charging station

| | | | |
|---|--------------------------------|---|---|
| 1 | Main unit including filter bag | 5 | Charging contacts for the robot vacuum cleaner |
| 2 | Infrared window | 6 | Connection for charging system (consisting of Kobold PC7 dual battery charger and Kobold ST7 mount for RB7 station) |
| 3 | Suction opening | 7 | Mains cable |
| 4 | Access ramp | 8 | Filter cover |

Note When reference is made to the 'charging station' in the following instructions, the information refers to both the solo charging station and the emptying & charging station.

3 Intended use

Retain this document for future reference. It is an important part of the device and must be kept with it if you pass it on to someone else.

Use the device and accessories only for their intended purpose in order to prevent risks to you and other people and to prevent damage to the device or to other property and equipment.

The device is not intended to be used by children under 8 years of age. Cleaning and user maintenance should not be carried out by children under 8 years of age. This device is not intended to be used by persons (including children aged 8 years and above) with reduced physical, sensory or mental capabilities or lack of experience and knowledge unless they are supervised by a person responsible for their safety, or have been given instruction from this person concerning the safe use of the device and understand the hazards involved.

Children must not be allowed to play with the device or the chargers (including the cable and plug).

Cleaning and user maintenance must not be carried out by children aged 8 years and above without supervision.

This appliance may only be used for its intended purpose. No other use is permitted. The manufacturer bears no responsibility for damages resulting from improper use. If the appliance is subject to technical modifications, the warranty and liability for material defects shall be rendered invalid. The manufacturer's obligation to compensate on the basis of product liability and/or the dealer's obligation to compensate for material defects shall no longer apply if technical modifications are made to the product.

When working with the device, please observe all the accompanying documentation as well as the device display. The manufacturer accepts no liability for damages resulting from improper use.

The device complies with the safety regulations of the country in which it has been sold by an authorised Vorwerk organisation. If the device is used in another country, compliance with the local safety standards cannot be guaranteed. Vorwerk therefore assumes no liability for any resulting safety risks for the user.

Kobold VR7 robot vacuum cleaner

The Kobold VR7 robot vacuum cleaner is solely intended for removing dirt and dust within domestic areas and is only suitable for indoor use. The Kobold VR7 robot vacuum cleaner may only be used with the corresponding Kobold accessories. The Kobold VR7 robot vacuum cleaner must not be stored or operated outdoors and must

be protected from moisture. The Kobold VR7 robot vacuum cleaner has a rotating brush and is intended for use on **different types of flooring** [► 20]. The following types of carpet and flooring must not under any circumstances be cleaned with the Kobold VR7 robot vacuum cleaner: carpets whose fibres are not firmly attached or not fulled and can therefore come loose, fur rugs, flokati rugs, loosely woven carpets, carpets with long interwoven fibres (Saxony), Lechtaler carpets (handwoven new wool carpets).

The following hard floors must not be cleaned with the Kobold VR7 robot vacuum cleaner: untreated or delicate floors, such as unsealed cork flooring, unsealed soft wood flooring, Belgian granite, delicate natural stone flooring, rough concrete flooring (e.g. washed concrete), yoga mats.

Kobold CB7 solo charging station The Kobold CB7 solo charging station is solely intended for charging the Kobold VR7 robot vacuum cleaner in domestic environments and is only suitable for indoor use. The Kobold CB7 solo charging station must not be stored or operated outdoors and must be protected from moisture.

Kobold RB7 emptying & charging station The Kobold RB7 emptying & charging station is solely intended for charging the Kobold VR7 robot vacuum cleaner and for automatically extracting dust from the device and is only suitable for indoor use. The Kobold RB7 emptying & charging station must not be stored or operated outdoors and must be protected from moisture. Used in combination with the Kobold PC7 dual battery charger and Kobold ST7 mount for the RB7 station, it can also charge the Kobold VK7 cordless handheld vacuum cleaner. The Kobold RB7 emptying & charging station may only be used with the corresponding Kobold accessories.

4 For Your Safety

Safety is an essential part of every Vorwerk product. However, product safety can only be assured if the device is used correctly and all safety instructions are followed.

About your Robot Vacuum Cleaner

The Kobold VR7 robot vacuum cleaner is an autonomous, self-navigating device. Taking into account the specific layout of your living space, the robot will clean your home independently and reliably, even when you are not there.

4.1 Hazards and safety instructions



WARNING

Risk of fire or electric shock!

If incorrect repairs are performed on the device or corresponding charger/charging unit, this may cause a fire or electric shock.

- Never attempt to repair the device yourself.
- Repairs to electrical appliances may only be carried out by a Vorwerk customer service centre, a workshop authorised by Vorwerk or a person with similar qualifications in order to avoid hazards.
- Defective parts may only be replaced by original replacement parts in order to avoid hazards.
- In the event of damage to your device, contact Vorwerk customer service.
- Only operate the charger/charging unit on a connection that has been properly installed by a qualified electrician.
- Do not attempt to open the charger and repair it yourself. The charger has live parts inside and is not a serviceable component.

Risk of electric shock!

The power cord may be damaged by tensile stress.

- Never pull the mains plug from the socket by the power cord, only by the plug.
- Never carry the chargers by the connection cable.

Risk of electric shock! If water gets into the electrical components, you could get an electric shock.

- The emptying & charging station is connected to the power supply. Before you start cleaning the emptying & charging station, ensure that the device is disconnected from the power.
- The emptying & charging station is connected to the power supply. Therefore, only clean the filter compartment and the sealing surfaces around the filter bag and around the robot vacuum cleaner with a slightly damp (not soaking wet!) cloth, if necessary.
- Never clean the remaining areas of the emptying & charging station, including the power cord, with water, liquid cleaners or a wet cleaning cloth.
- Never clean the mains plug on the charging station with water, liquid cleaners or a wet cleaning cloth.
- Do not use the charger or charging unit in damp environments.
- Never immerse the charger or charging unit in water or other liquids.
- Never pour water over the charger or charging unit.
- Do not hold the charger or charging unit under running water.
- Do not touch the charger or charging unit with wet hands.

Risk of fire or electric shock! If the device runs over power cords, exposed cables or hanging wires, it could damage them. Touching a damaged cable could cause an electric shock.

- Make sure that the power cord does not come into contact with the rotating brushes, wheels or rollers on the device.

Risk of fire or electric shock! Damage to the emptying & charging station or connection cables could cause an electric shock or fire.

- If the mains power cord on the emptying & charging station is damaged, it must be replaced by a compatible original Vorwerk mains power cord.
- Do not continue using the emptying & charging station and power cord if they are damaged.
- Ensure that you do not damage, bend or twist the mains cable.
- Do not put heavy objects on the mains cable.

Risk of electric shock! Carrying out cleaning when the charger is still plugged in could cause an electric shock.

- Disconnect the charger and/or connection cable for the charger from the power socket before cleaning.

| | |
|-----------------------------------|--|
| Risk of electric shock! | <p>Improper use of the device could cause an electric shock.</p> <ul style="list-style-type: none"> • Do not insert any sharp objects into the electrical contacts. • Do not modify the electrical contacts. • Always switch off the charging units and disconnect the mains plug before carrying out any retrofitting, cleaning or maintenance work on them. |
| Explosion hazard! | <p>The improper handling of the battery or the device could cause an explosion.</p> <ul style="list-style-type: none"> • Only use original Vorwerk batteries that are compatible with your device. • Never attempt to open, repair or modify the battery. Defective batteries must be replaced by new original Vorwerk batteries. • Stop using the battery if it is damaged. |
| Risk of fire or explosion! | <p>If burning or readily ignitable substances should enter the interior of the device, this may cause fire or an explosion.</p> <ul style="list-style-type: none"> • Do not vacuum hot ash or burning cigarette ends. • Do not vacuum explosive or readily inflammable substances. |
| Risk of fire or explosion! | <p>The device could start to burn if it is exposed to heat, if the power supply unit is covered, or as a result of improper use.</p> <ul style="list-style-type: none"> • The device and all its accessories (especially the battery) must never be placed on an open fire or exposed to an external heat source. • Stop using the device and all its accessories (especially the battery) if they have been dropped on the floor and show visible signs of damage or appear to be faulty. • Do not short-circuit the battery under any circumstances, e.g. as a result of metal objects coming into contact with the battery terminals. • Make sure that the power supply unit is not covered. |
| Risk of fire or explosion! | <p>Charging non-rechargeable batteries can cause a fire or explosion!</p> <ul style="list-style-type: none"> • Only use the original Vorwerk battery that is compatible with your device. |
| Fire hazard! | <p>The use of an incompatible charger can damage the battery and cause a fire.</p> <ul style="list-style-type: none"> • Only use the device with original Kobold accessories. • To charge the battery/device, only use the removable power unit (charger/charging unit) that was supplied with the device. |

Fire hazard!**Safety hazards within a workspace can cause a fire.**

- Never use the device in rooms where there are burning candles or lamps on moveable pieces of furniture or on the floor.
- Secure exposed and hanging cables on electrical appliances (e.g. table lamps). These could be pulled down by the connecting cables, causing damage or a fire.
- Do not let the device drive over recessed floor lamps. Stopping over a lamp could damage the device and, in the worst case, cause a fire.
- Do not use the device in danger areas, e.g. near open fireplaces.

Fire hazard!**If water gets inside the battery, it could cause a fire.**

- Never clean the battery with water, liquid cleaners or a wet cleaning cloth.
- Keep the battery away from water and other liquids.

Fire hazard!**The charging contacts can be short-circuited.**

- Never place objects onto the charging contacts on the chargers.

Risk of fire!**If the device or battery are accidentally triggered or activated when in transit, this could cause a build-up of heat, which could lead to a fire.**

- Follow the instructions in the manual to ensure safe transportation.

Risk of choking!**Small parts may be accidentally swallowed and cause choking.**

- Keep small parts such as fragrance chips out of the reach of children.

Risk of serious injury!**If the floor sensors are covered or dirty, the device may fall down stairs or landings.**

- Before starting the robot, remove easily moveable items, including rugs or runners, as well as lightweight, loose objects from the area in which the robot will be operating. Such objects may be pushed along in front of the robot vacuum cleaner, thereby obstructing its floor sensors.
- Clean the floor sensors regularly (every time the dust container is emptied).

**CAUTION****Risk of burns!****If water enters the charging plug, it could heat up.**

- Never clean the charging plug with water, liquid cleaners or a wet cleaning cloth.

Risk of injury!

The device or charging unit could injure children or pets if they come into contact with them.

- Keep children and pets away from the robot vacuum cleaner, and do not let them sit or stand on the robot vacuum cleaner or charging unit.

Risk of injury from moving parts!

You could injure yourself on moving parts.

- Stay clear of moving parts.
- Never reach into the moving parts.
- Finish the cleaning cycle and lay the device upside down on a solid, level surface before you start to carry out maintenance on the brushes.

Risk of injury due to sharp fragments of plastic!

Broken plastic can have sharp edges and you could injure yourself.

- Do not use the device if plastic components have been damaged due to being knocked or dropped.
- Protect yourself from fragments with sharp edges.

Risk of injury due to negative pressure!

Vacuuming of skin or hair can cause injury.

- Ensure that the area in which the robot is working is prepared in such a way that no hair or parts of the body can come into contact with the robot's suction and the robot does not operate near children or pets.

Risk of contact with dangerous substances!

Leaked electrolyte from batteries and rechargeable batteries can cause injuries.

- Do not touch leaked electrolyte or electrolyte residues from leaking batteries or rechargeable batteries without skin or eye protection.
- Leaking electrolyte must not come into contact with skin, eyes or mucous membranes.
- In case of accidental contact, immediately wash your hands and flush the eyes or mucous membranes with plenty of clean water.
- Keep away from leaking electrolyte vapours and ensure that there is good ventilation.
- If irritation persists or the electrolyte has come into contact with the eyes or mucous membranes, seek medical advice.
- Clothing and textiles that have come into contact with leaked electrolyte or electrolyte residues must be thoroughly washed immediately or disposed of.
- Leaked electrolyte, electrolyte residues as well as leaking batteries and rechargeable batteries are flammable. Keep them away from fire and heat.

Risk of injury!

Various sensors contain approved invisible lasers. Please observe the following guidelines to prevent localised injuries from the laser.

- Switch off the device prior to all retrofitting work.
- Modifications to the device or attempts to repair the device, especially the sensors, are prohibited.
- Do not continuously look into the gap between the operator panel and top round cover or into the sensors while the device is running.

Loss of suitability for allergy sufferers and risk of damage from improper use!

Unsuitable or damaged filter material will not retain fine, allergenic particles.

- Only use the original Kobold products that are intended to be used with this device.
- Do not reuse spent Kobold premium filter bags.
- Only use the device with an original Kobold premium filter bag installed.

NOTICE

| | |
|---|--|
| Risk of damage from improper use! | Improper use of the charger could damage the device. <ul style="list-style-type: none">• To charge the device, only use the original charger and/or charging unit and mains cable from Vorwerk that are designed to be used with this product.• Only operate the charger and/or charging unit with the alternating current voltage and mains frequency stated on the type plate. |
| Risk of damage from improper use! | Improper use of the device may damage it. <ul style="list-style-type: none">• Do not block the air outlets during use under any circumstances. Keep the device free of contaminants that reduce airflow. |
| Risk of damage to the floor! | The improper use of the device could cause damage to the floor. <ul style="list-style-type: none">• Please refer to the cleaning and care information issued by the floor manufacturer. |
| Risk of damage to other objects! | When in operation, the device could damage other objects that are situated in the area being cleaned. <ul style="list-style-type: none">• Remove lightweight, breakable and moveable objects (e.g. vases, curtains and similar) from the work area. These could be dragged along by the robot vacuum cleaner and, depending on the nature of the object, cause damage to the device, the floor or the object itself.• Secure curtains, tablecloths and cords in the work area. |
| Risk of damage from improper use! | Certain vacuumed materials can clog the pores on the filter. <ul style="list-style-type: none">• Do not vacuum up Kobosan active or other powdered cleaning agents with the device.• Do not vacuum up very fine sand, chalk, cement dust or similar. |
| Risk of damage from improper use! | If you use the robot vacuum cleaner without a filter, it could damage the motor and shorten the service life of the device. <ul style="list-style-type: none">• Never use the device without a filter. |
| Risk of damage as a result of battery discharge! | Deep discharging of the battery could cause permanent damage. <ul style="list-style-type: none">• Fully charge the device at least once a year in order to prevent deep discharge, which can damage the battery. |

| | |
|--|--|
| Risk of damage from improper use! | <p>If the sensors are covered, the device may not be able to function, communicate or navigate correctly.</p> <ul style="list-style-type: none"> • Take care to avoid scratching the infrared window of the charging station and do not cover it with stickers or other objects. • Do not cover the sensors on the device. |
| Risk of damage from improper use! | <p>Using the device on unsuitable flooring can damage it.</p> <ul style="list-style-type: none"> • Please refer to the cleaning and care information issued by the floor manufacturer. • Only use the device to vacuum carpets without fringes with a pile height of up to 15mm and only carpets that are approved for cleaning with an active brush. • Section off unsuitable carpets using the virtual no-go zones in the MyKobold app. • If you are unsure whether your carpet is suitable for cleaning with the robot, test the device in an inconspicuous area first. |
| Risk of damage from improper use! | <p>Using the device on unsuitable surfaces can cause damage.</p> <ul style="list-style-type: none"> • The device is not approved for cleaning worktops or ceramic hobs. |
| Risk of damage from improper use! | <p>The app control makes it possible to use the device without it being in sight. If the area in which the robot is operating is not sufficiently prepared, damage may occur.</p> <ul style="list-style-type: none"> • Make sure that the area in which the robot is to operate is prepared according to the instructions in this manual before using the device. |
| Risk of damage from improper use! | <p>If the device is not in perfect working order, it could cause damage.</p> <ul style="list-style-type: none"> • Only use the original Vorwerk products that are intended to be used with this device. • Do not operate the device if the device itself or the power cord are damaged or if the device is not fully assembled. |
| Risk of damage to the battery! | <p>Extreme heat or cold shortens the service life and/or can cause damage to the batteries.</p> <ul style="list-style-type: none"> • Do not expose the device to fire, heat, direct sunlight or excessive temperatures. • Do not place the device near a heat source (oven, heater or hot radiator). • Always comply with the ambient temperatures specified in the technical data for storage and operation. |

| | |
|--|--|
| Risk of damage due to incorrect cleaning! | <p>The device could get damaged if not cleaned correctly.</p> <ul style="list-style-type: none"> • Never clean the device or charging station with water, liquid cleaners or a wet cleaning cloth. • Never wet-clean the roller brush. Use a dry or slightly damp cloth if necessary. The roller brush is not dishwasher safe or waterproof. • Do not use abrasive cleaning pads, scouring agents or aggressive liquids such as benzene or acetone to clean the device. • Do not use disinfectant to clean the device. |
| Risk of damage from improper use! | <p>The device can get damaged if you use it outdoors or in damp areas.</p> <ul style="list-style-type: none"> • Do not use the robot vacuum cleaner in areas where it could be exposed to wet conditions or moisture, such as near showers or swimming pools. • Do not use the device outdoors. |
| Risk of damage from improper use! | <p>Damp in the filter compartment of the emptying & charging station or in the dust container of the robot can damage the device.</p> <ul style="list-style-type: none"> • If the filter compartment becomes damp, dry it before using it again. • Replace the robot's filter and/or the premium filter bag. |
| Risk of damage from improper use! | <p>If the device or emptying & charging station are not in perfect working order, they could cause damage.</p> <ul style="list-style-type: none"> • Only use the robot vacuum cleaner and emptying & charging station with the Kobold motor protection filter installed. |
| Risk of damage from improper use! | <p>A damp motor protection filter can cause damage.</p> <ul style="list-style-type: none"> • If the motor protection filter is damp, let it dry out in a warm place for 24 hours before putting it back into the device. |
| Risk of damage to the device! | <p>Moisture inside the device can damage it.</p> <ul style="list-style-type: none"> • Do not vacuum liquids or damp dirt. • Do not vacuum damp doormats or carpets. • Do not use the device in damp environments (in wet bathrooms or outdoor areas, etc.) or in places where there is a risk that the device could come into contact with liquids. • Never pour water over the device or hold it under running water. Never immerse the device in water or other liquids. • Do not store the device outdoors. • Keep the device protected from moisture. |


4.2 Classification of safety warning messages

The safety warning messages in this manual are highlighted by safety symbols and signal words. The symbol and signal word indicate the severity of the potential hazard.

Classification of safety warning messages

The safety warning messages that precede each action are shown as follows:

WARNING



Type and source of hazard







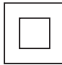


Explanation of type and source of hazard/consequences

- Measures to prevent hazard

Meaning of signal words

| | |
|---------|---|
| WARNING | Risk of death or serious injury if hazard is not avoided. |
| CAUTION | Risk of minor injury if hazard is not avoided. |
| NOTICE | Material damage if hazard is not avoided. |

Meaning of safety symbols

| | | | | | |
|--|--|---|--|---|---|
|  | Safety warning message indicating the severity of the potential hazard |  | Reference to damage to property or equipment |  | Laser |
|  | Indoor use only |  | Read manual before charging |  | Do not use if the mains plug is damaged or the pins are bent! |
|  | Device of protection class II |  | Removable power supply unit |  | Functional earth |

4.3 Obligations of the user

To ensure that your device and the Vorwerk accessories operate correctly, please follow the guidelines below:

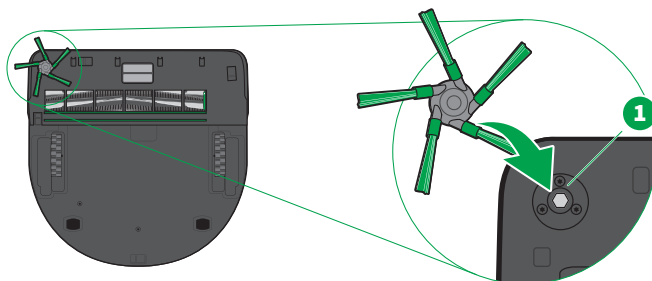
1. Follow the instructions in the manual and all accompanying documentation.
2. Keep the manual in a place where it can be easily accessed, should you need to refer to it.
3. Ensure that any damage to the device is repaired without delay by the manufacturer.

5 Suitability for different types of floors

| Carpet type | Kobold VR7 |
|--|------------|
| Loop pile carpeting, Velour carpeting | ++ |
| Berber carpeting, deep-pile carpeting, light, loose carpets, silk carpeting, sisal carpeting | + |
| Fur | - |
| Flokati | - |
| Loosely woven carpets | - |
| Carpets with long interwoven fibres (Saxony) | - |
| Yoga mats | - |
| Carpets with fibres that are not spun/lightly spun (e.g. Lechtal carpets in handwoven new wool) | - |
| Hard floor type | |
| Sealed/varnished wooden floors (floorboards, parquet) | ++ |
| Oiled/waxed wooden floors | + |
| Unsealed/untreated wooden floors | - |
| Sealed cork floors | ++ |
| Oiled/waxed cork floors | + |
| Unsealed/untreated cork floors | - |
| Laminate | ++ |
| Elastic flooring (PVC, cushion vinyl, linoleum) | ++ |
| Stone floors (marble, granite, Jura limestone, artificial stone) | ++ |
| Porous/delicate natural stone (slate, clinker tiles) | - |
| Clay floors (terracotta, clinker, brick clay tiles) | ++ |
| Ceramic glazed tiles and fine stoneware | ++ |
| Untreated tiled floors | - |
| Rough concrete flooring (washed concrete) | - |

++ excellent suitability
 + limited suitability
 - not suitable

6 Assembly



1. Remove the transparent protective films from the robot vacuum cleaner.
2. Attach the side brush by pressing it into position on the mounting point (1).

7 Getting the charging station ready for use

The robot vacuum cleaner can be operated with two different charging stations:

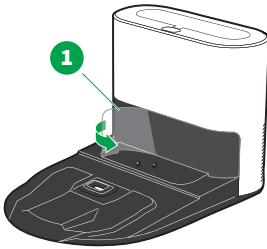
- with the **Kobold CB7 solo charging station** [► 7]

or

- with the **Kobold RB7 emptying & charging station** [► 7]

7.1 Removing the protective film

- Before first use, remove the protective film (1) from the infrared window on the charging station (the emptying & charging station is shown here).

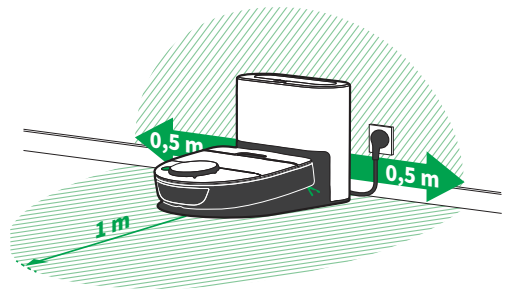
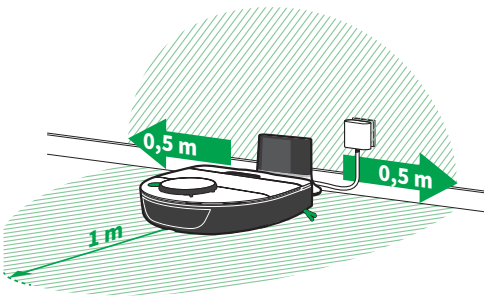


7.2 Choosing a setup location

High ambient temperatures can have an effect on the cooling times of lithium-ion batteries. Do not position the charging station in a place that is exposed to direct sunlight, as this can increase the charging time and shorten the battery life.

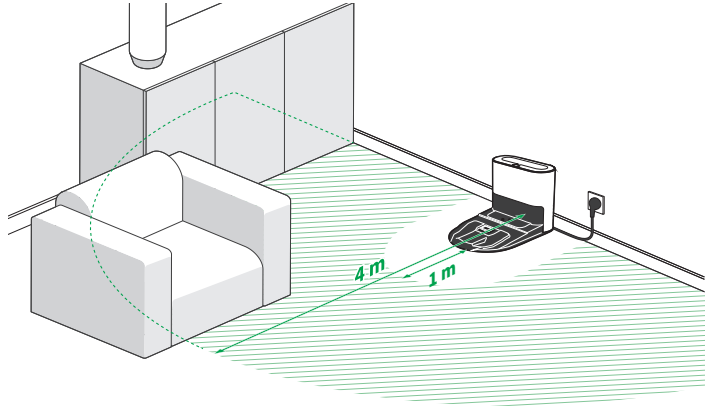
Option A Kobold CB7 solo charging station

Option B Kobold RB7 emptying & charging station



1. Place the charging station on a level surface so that the charging contacts and infrared window are freely accessible for the robot vacuum cleaner.
2. Put the charging station in a place where there is relatively little activity and where furniture is not often moved.

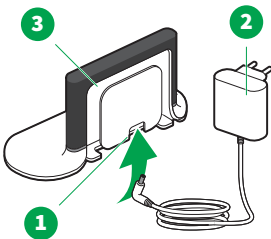
3. Make sure that there is a strong Wi-Fi signal from your router to the charging station in case you want to control your robot using the app.
4. Make sure that there are no obstacles within 0.5 metres on either side of the robot vacuum cleaner.
5. Ensure that there is a level, freely accessible area approx. 1 metre in front of the robot vacuum cleaner.



6. Provide your robot vacuum cleaner with sufficiently large reference points, such as furniture, in the 4-metre radius in front of the charging station.
7. Do not set up the charging station underneath furniture, on stairs or landings, in direct sunlight or in front of black, dark or highly reflective walls.

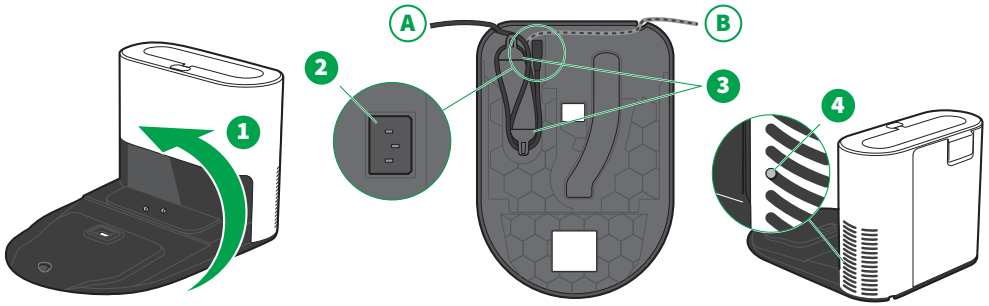
7.3 Connecting the mains cable

Kobold CB7 solo charging station



1. Plug the charging plug into the designated charging socket (1) on the solo charging station and ensure that it is fully inserted.
2. Connect the mains plug (2) to a socket.
3. Wind any excess cable around the cable holder (3).

Kobold RB7 emptying & charging station



1. Turn the emptying & charging station over (1).
The connector for the power supply (2) is located on the underside of the emptying & charging station.
2. Insert the plug into the connector for the power supply (2).
3. Wind any excess cable around the holder (3) on the emptying & charging station.
4. Guide the cable out through one of the two slots on the base (A or B).
5. Put the emptying & charging station back into the correct position.
6. Connect the mains plug to a socket.
⇒ *The white LED (4) behind the air vent on the side of the emptying & charging station will light up.*

8 Preparing your household

Your robot vacuum cleaner has a number of safety functions. Nevertheless, you should observe the following before using your robot vacuum cleaner:

| | |
|--|---|
| What should you pay particular attention to? | √ |
| Secure exposed and hanging cables on electrical appliances (e.g. table lamps). | □ |
| Remove easily moveable items, including rugs or runners, as well as lightweight, loose objects. | □ |
| Pay special attention to the floor suitability table [► 20]. | □ |
| If you are unsure whether your carpet is suitable for cleaning with the robot, test the device in an inconspicuous area first. | □ |
| Do not use the robot vacuum cleaner in danger areas, e.g. near open fireplaces. | □ |
| Never use the robot vacuum cleaner in rooms where there are burning candles or lamps on moveable pieces of furniture or on the floor. | □ |
| Do not let the robot vacuum cleaner drive over recessed floor lamps. | □ |
| Once you have set up the MyKobold app, section off unsuitable carpets or rugs using the virtual no-go zones in the app. For the robot's initial exploration run, it is best to use physical boundaries or remove the rug altogether. | □ |

9 Putting into operation for the first time

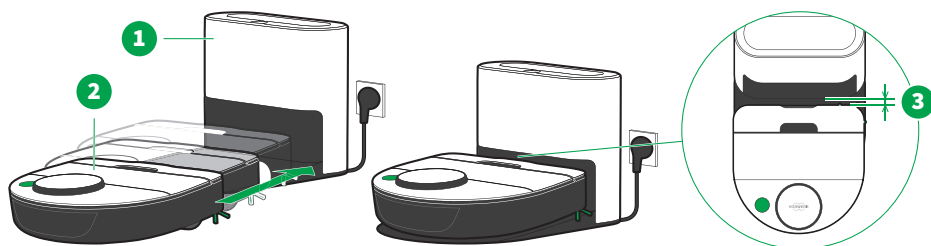
Your home is now [prepared for the robot](#) [► 25] and the charging station has a [designated place](#) [► 22]. Before your robot vacuum cleaner can get to work, you need to set it up for operation.

1. [Fully charge the robot vacuum cleaner before using it for the first time.](#) [► 25]
2. Install the MyKobold app while your robot vacuum cleaner is charging for the first time. [You can set up the Wi-Fi connection while charging is in progress](#) [► 41].

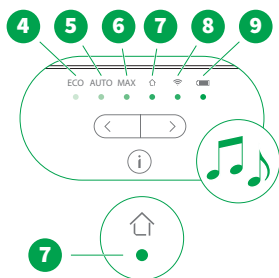
9.1 Charging for the first time

Important When charging the device for the first time, it can take up to 10 seconds for the charging process to start.

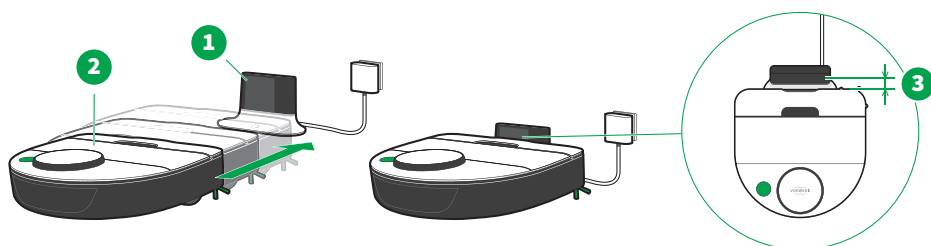
9.1.1 Charging on the emptying & charging station



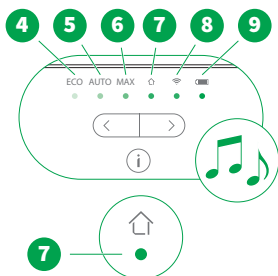
1. Ensure that the emptying & charging station (1) is connected to the power supply [► 23].
2. Slide the robot vacuum cleaner (2) onto the emptying & charging station (1) until you feel a slight click, but not right up to the infrared window.
 - ⇒ The robot vacuum cleaner is in the correct position when there is a small gap (3) of approx. 1.5 cm between the infrared window and the robot vacuum cleaner.
3. Wait a few seconds for the initialisation to complete.
 - ⇒ The ECO, AUTO, MAX, Home, Wi-Fi and Battery LEDs (4-9) will light up in succession, then flash three times and you will hear a beep.
 - ⇒ **The Home LED (7) will remain green. This indicates that the robot vacuum cleaner is correctly positioned.**
 - ⇒ During the charging process, the Battery LED (9) will pulsate until charging is complete. When the battery is fully charged, the Battery LED (9) will be permanently lit.



9.1.2 Charging on the solo charging station



1. Ensure that the solo charging station (1) is connected to the power supply [► 23].
2. Slide the robot vacuum cleaner (2) onto the solo charging station (1) until you feel a slight click, but not right up to the infrared window.



- ⇒ *The robot vacuum cleaner is in the correct position when there is a small gap (3) of approx. 1.5 cm between the infrared window and the robot vacuum cleaner.*
- 3. Wait a few seconds for the initialisation to complete.
 - ⇒ *The ECO, AUTO, MAX, Home, Wi-Fi and Battery LEDs (4-9) will light up in succession, then flash three times and you will hear a beep.*
 - ⇒ ***The Home LED (7) will remain green. This indicates that the robot vacuum cleaner is correctly positioned.***
 - ⇒ *During the charging process, the Battery LED (9) will pulsate until charging is complete. When the battery is fully charged, the Battery LED (9) will be permanently lit.*

9.2 Installing the MyKobold app and pairing your robot vacuum cleaner



The MyKobold app offers many useful features that allow you to customise the way you use your robot vacuum cleaner. Using the app, you can find information on the device, create schedules and cleaning areas and obtain helpful tips for troubleshooting.

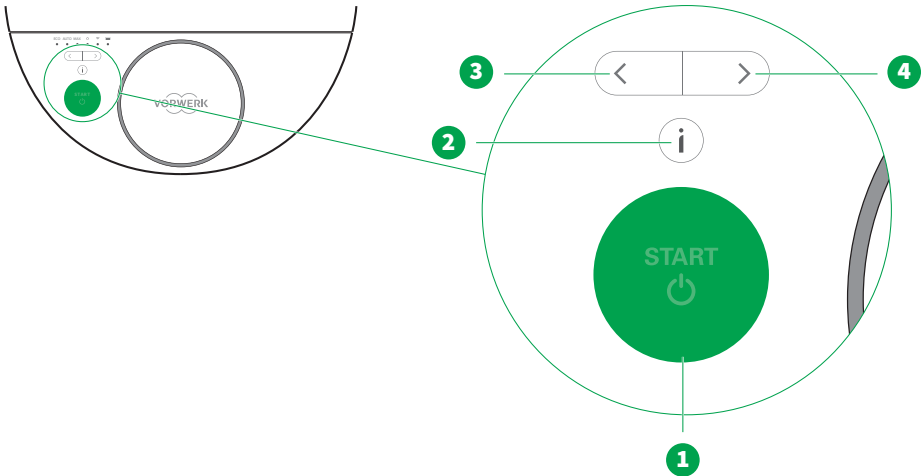
1. Download the MyKobold app from the Apple App Store or Google Play Store and install it on your smartphone or tablet. You can find the app under the name *MyKobold*.



2. Initialise the **first battery charge and switch the robot vacuum cleaner on** [▶ 25].
3. Launch the app, select *Add Robot* and follow the step-by-step instructions in the app.
You can add multiple robot vacuum cleaners in the app.
4. During the course of this, the robot vacuum cleaner will start an initial exploration run. In this first cleaning run, it will create a map of the cleaning area, which you can use, for example, to exclude certain areas from the clean in the app (no-go zones).

10 Function overview

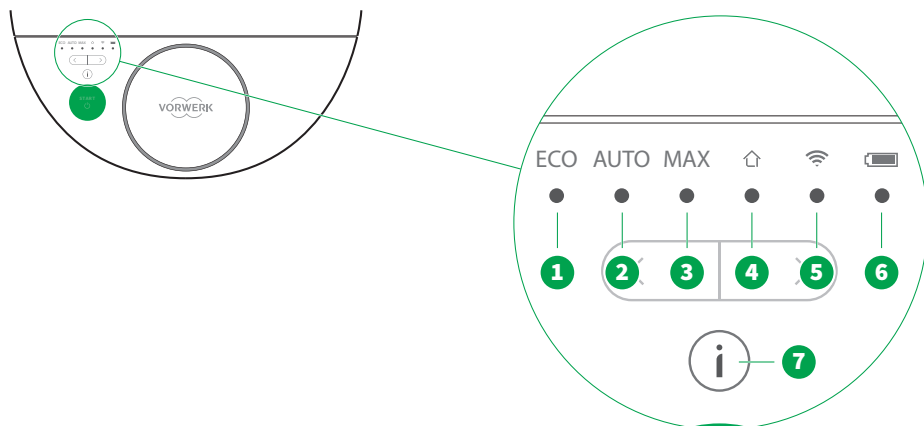
10.1 Operator panel overview



| No. | Name | Meaning |
|-----|----------------------|---|
| (1) | START button | Starts, stops or pauses the cleaning process. |
| (2) | Information button | The information button lights up and indicates the type of message (information, warning or error) that will play next. When you press the information button, this message will be played. |
| (3) | Selection key, left | For selecting MAX, AUTO or ECO as well as the Wi-Fi or Home function. |
| (4) | Selection key, right | You always start on the cleaning mode that is currently selected. |

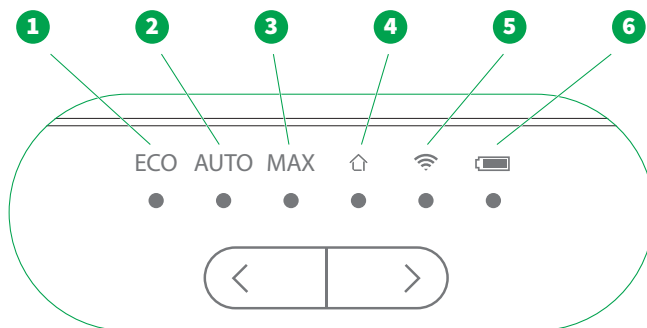
10.2 LED displays

10.2.1 Overview of LED displays



| No. | Name | Meaning |
|-----|------------------------|--|
| (1) | <i>ECOLED</i> | The robot vacuum cleaner operates in ECO mode with reduced motor output (fan and brush performance), see ECO mode [► 34]. It is quieter, uses less energy and is suitable for light to moderate dirt. The <i>ECOLED</i> lights up green when this mode is selected. |
| (2) | <i>AUTOLED</i> | The AUTO cleaning mode adjusts the fan and brush performance to the type of floor (carpet or hard floor), see AUTO mode [► 34]. The <i>AUTOLED</i> lights up green when this mode is selected. |
| (3) | <i>MAXLED</i> | The MAX cleaning mode offers maximum cleaning performance (maximum fan and brush performance). As the standard cleaning mode, it is suitable for most cleaning requirements and offers the best results on carpets and hard floors, see MAX mode [► 34]. The <i>MAXLED</i> lights up green when this mode is selected. |
| (4) | <i>HomeLED</i> | Indicates whether the robot vacuum cleaner can locate the charging station. If it can, it will return to the charging station. If the robot vacuum cleaner is docked on the charging station and switched on, the LED indicates that the robot is correctly positioned there. |
| (5) | <i>Wi-FiLED</i> | Indicates whether there is a connection to your home network. |
| (6) | <i>BatteryLED</i> | Indicates the charge level of the robot vacuum cleaner. The battery charge level is indicated by different colours, see Battery status [► 31]. |
| (7) | Information button LED | The information button gives you information on the current status of the robot vacuum cleaner and the emptying & charging station. The colours of the information button LED have the following meaning: Green: information Yellow: warning Red: error |

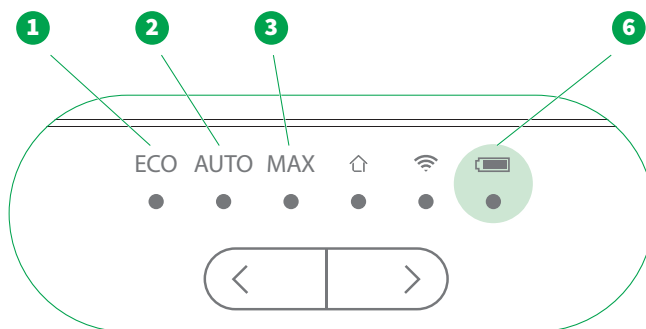
10.2.2 Status of the robot vacuum cleaner



| LED display | Status |
|---|--|
| LEDs (1-6) light up one after the other | The robot vacuum cleaner is correctly positioned on the charging station. The illumination of the LEDs occurs once. |
| All LEDs (1-6) off | The robot vacuum cleaner is switched off. |
| All LEDs (1-6) come on in succession | The robot vacuum cleaner is powering up. |
| All LEDs (1-6) light up green three times | The robot vacuum cleaner is ready for use. |
| <i>Home</i> LED (4) lights up green | The robot vacuum cleaner is running, the location of the charging station is known. If the robot vacuum cleaner is docked on the charging station and switched on, the LED indicates that the robot is correctly positioned there. |
| <i>Home</i> LED (4) lights up yellow | Location of the charging station is unknown. The robot vacuum cleaner cannot locate the charging station. |
| <i>Home</i> LED (4) pulsates green | The robot vacuum cleaner is returning to the charging station (home). |
| <i>Battery</i> LED (6) | For detailed information on the battery, see Battery status [► 31]. |

For further information, see [Operation](#) [► 33].

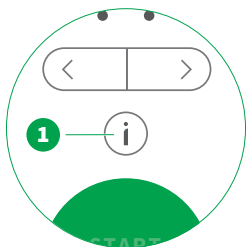
10.2.3 Battery status



| Battery LED (6) | Status |
|---|--|
| Off | Robot vacuum cleaner is switched off or the battery is empty |
| Pulsates red first, then green until charging is complete | Robot vacuum cleaner is charging during a cleaning cycle, <i>ECO (1)</i> , <i>AUTO (2)</i> and <i>MAX (3)</i> LEDs: selected mode has a solid green light |
| Pulsates green until charging is complete | Robot vacuum cleaner is charging and is ready for use, all other LEDs are off |
| Pulsates green until charging is complete (50% dimmer) | Robot vacuum cleaner is charging and is on standby, all other LEDs are off |
| Solid green light | Fully charged and ready for use |
| Solid green light (50% dimmer) All other LEDs are off | Fully charged and standby |
| Pulsates red, robot vacuum cleaner is in motion | Battery charge < 25% (only ready once battery has been charged) |
| Solid green light, robot vacuum cleaner is in motion | Battery charge > 25% |
| Flashes red | Critical error, please contact customer service [▶ 66] |

10.3 Voice response

The information button LED lights up to indicate that there is a message (information, warning, error). When you press the information button, you will hear this message.



You can set the robot's voice response to different languages.

- Hold down the information button (1) and select the preferred language by pressing the selection keys left or right.
- ⇒ *The voice function on the robot will tell you the language that is currently selected each time you press the selection key.*

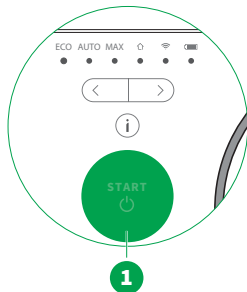
11 Operation

You can control the robot vacuum cleaner manually using the [operator panel](#) [► 28]. You will find out how to do this in the following sections.

The [MyKobold app](#) [► 27] also offers you further options and gives you extensive control over the device.

11.1 Switching on

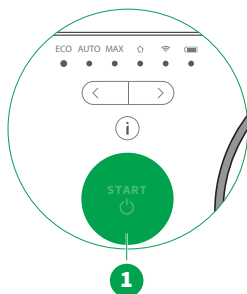
- Press the START button (1) on the robot vacuum cleaner.
⇒ *The robot vacuum cleaner is activated. The LEDs switch on in succession until all 6 LEDs light up green simultaneously three times.*



11.2 Starting cleaning

If you want to manually start the cleaning process when the robot vacuum cleaner is switched on, proceed as follows:

- Press the START button (1) on the robot vacuum cleaner again.
⇒ *The robot vacuum cleaner will set off and start cleaning.*



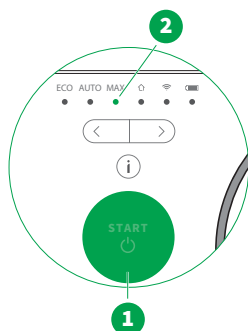
11.3 Selecting a cleaning mode

The cleaning mode can be selected. The robot vacuum cleaner will stay in the cleaning mode that was last selected even if it is set to standby.

11.3.1 MAX mode

The MAX cleaning mode (2) is the default setting and is activated by pressing the START button (1). As the default mode, it is suitable for most cleaning requirements and offers the best results on carpets and hard floors.

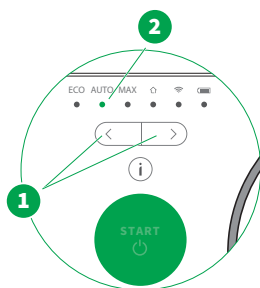
- Start the cleaning process by pressing the START button (1).



11.3.2 AUTO mode

The AUTO cleaning mode automatically adjusts the fan and brush performance to the type of floor (carpet or hard floor). The *AUTO* LED lights up when this mode is selected.

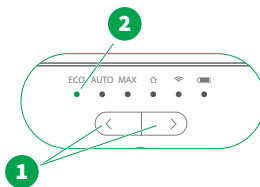
1. Press one of the selection keys (1) to select AUTO mode.
⇒ *The AUTO LED (2) pulsates white. This means that AUTO mode has been selected. After 3 seconds, the AUTO LED (2) becomes a solid green light to indicate that the selected mode is confirmed.*
2. Now press the START button to run the robot vacuum cleaner in AUTO mode.
⇒ *The robot vacuum cleaner will now adjust its settings to the flooring.*



11.3.3 ECO mode

In ECO mode, the robot vacuum cleaner works with reduced motor performance. It is quieter, uses less energy and is suitable for light to moderate dirt. In ECO mode, the battery capacity of the robot vacuum cleaner is sufficient for up to 120 minutes.

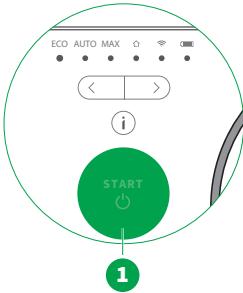
1. Press one of the selection keys (1) to select ECO mode.
⇒ *The ECO LED (2) pulsates white. This means that ECO mode has been selected. After 3 seconds, the ECO LED (2) becomes a solid green light to indicate that the selected mode is confirmed.*
2. Now press the START button to run the robot vacuum cleaner in ECO mode.



11.4 Pausing

If you want to interrupt the cleaning process for a short time, proceed as follows:

1. Press the START button (1) on the robot vacuum cleaner.
⇒ *The LED for the mode that is currently selected flashes.*
2. Press the START button (1) again to resume the cleaning cycle.



11.5 Starting cleaning on a low battery

Robot vacuum cleaner is at the charging station

If the robot vacuum cleaner is at the charging station and has less than 25% battery charge, it cannot start the cleaning cycle.

- Press the START button.
⇒ *If the battery charge is below 25%, the voice response will tell you that cleaning will start as soon as the battery is fully charged.*

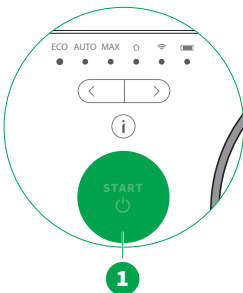
Robot vacuum cleaner is in a room

If the robot vacuum cleaner is in a room and not at the charging station and has less than 25% battery charge, it cannot start cleaning.

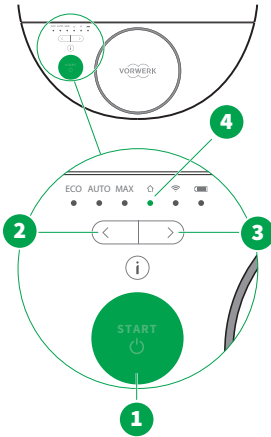
1. Press the START button.
⇒ *If the battery charge is below 25%, the voice response will tell you that the robot's battery charge is low and that you should place the robot on the charging station for recharging.*
2. Place the robot vacuum cleaner on the charging station.

11.6 Cancelling cleaning

1. Press the START button (1) twice.
⇒ *Cleaning is stopped.*
2. Carry the robot vacuum cleaner back to the charging station.



11.7 Returning the robot vacuum cleaner to the charging station



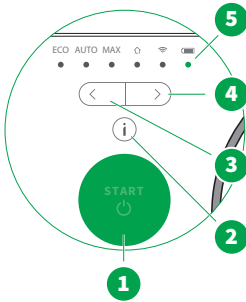
You can send the robot vacuum cleaner back to the charging station. To do this, the robot vacuum cleaner must be able to locate the charging station. If the robot vacuum cleaner recognises where the charging station is located, the *Home* LED (4) will be lit green. If the robot vacuum cleaner does not know where the charging station is, the *Home* LED (4) will be lit yellow.

If the *Home* LED is lit green, you can return the robot vacuum cleaner to the charging station as follows:

1. If the robot vacuum cleaner is in the process of cleaning, pause the cleaning cycle by pressing the START button (1).
2. Then press the left (2) or right (3) selection key so that the *Home* LED (4) flashes white.
3. Press the START button to confirm your selection.
⇒ *The robot vacuum cleaner returns to the charging station. As it does so, the Home LED pulsates green.*

If the *Home* LED is lit yellow, you will need to take the robot vacuum cleaner back to the charging station and **manually charge it** [▶ 40].

11.8 Standby mode



The robot vacuum cleaner automatically switches to standby mode if it is not used for approximately 2 minutes. The *Battery* LED (5) lights up to indicate the current battery status and is up to 50% dimmer. All other LEDs are off.

Starting the robot vacuum cleaner from standby mode

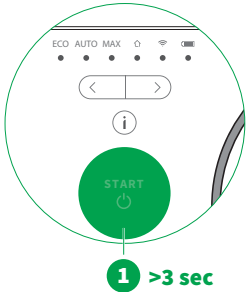
- Press the START button (1).
⇒ *The robot vacuum cleaner will set off and start cleaning.*

Waking up the robot vacuum cleaner

- Press one of the selection keys (3), (4).
⇒ *The robot vacuum cleaner will wake up. The LED display will come on. With sufficient battery charge, the robot vacuum cleaner will be ready to use again.*

You can also wake up the robot vacuum cleaner by picking it up or pressing one of its bumpers.

11.9 Switching off the robot vacuum cleaner



If you do not want to use the robot vacuum cleaner for an extended period (e.g. while on holiday), you can switch it off completely.

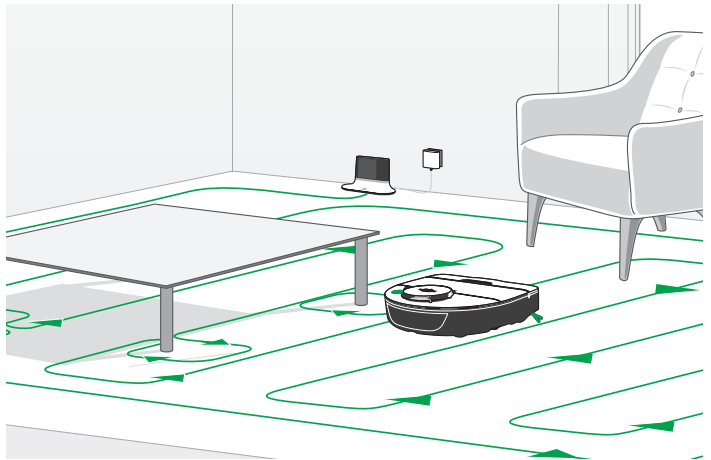
- Press the START button (1) for approx. 3 seconds until all the LEDs have gone out.
⇒ *The robot vacuum cleaner is now switched off.*

12 Information on the robot's operating method

12.1 General cleaning pattern of the robot vacuum cleaner

The robot vacuum cleaner works in straight, parallel lines to ensure that your floors are cleaned as effectively as possible. It divides larger rooms into areas of approx. 4 x 4 m.

It starts by moving along the outer edge of each area before cleaning the inner section. It continues in this way, one section at a time. When the robot vacuum cleaner has finished cleaning, it returns to the charging station.



Depending on the layout (furniture, doors, etc.), the robot will divide rooms into various sub-areas. It may be that the robot vacuum cleaner initially leaves out a sub-area and returns to it later. The entire floor area will however be cleaned. This can be optimised by moving the charging station.

12.2 Cleaning area and navigation of the robot vacuum cleaner

The robot vacuum cleaner climbs over low objects within the area to be cleaned. It recognises obstacles and navigates around them with little or no contact.

12.2.1 Climbing over objects



Despite its low height, the robot vacuum cleaner can easily climb over objects with a height of up to 15mm (e.g. door sills, carpets/ rugs).

The climbing ability of the robot vacuum cleaner can be influenced by the shape of the object, the type of floor covering and other local conditions.

12.3 Charging process of the robot vacuum cleaner

12.3.1 Automatic charging

Once cleaning is complete or when the battery charge drops to too low a level, the robot vacuum cleaner automatically returns to the charging station to recharge. As soon as the robot vacuum cleaner is connected to the charging station, the *ECO*, *AUTO*, *MAX*, *Home*, *Wi-Fi* and *Battery* LEDs light up in succession.

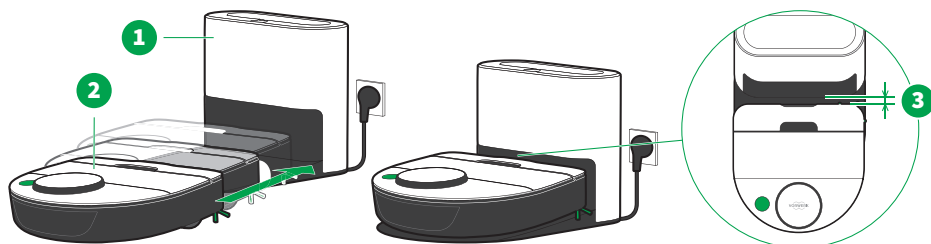
Note Before the charging process can start, the emptying & charging station extracts any dust and dirt from the robot vacuum cleaner. This takes approx. 25 seconds. The charging process can only start once this has been completed. You can customise the suction on the robot vacuum cleaner in the MyKobold app.

The robot vacuum cleaner only returns to the charging station automatically if it can locate it, e.g. if it started cleaning from the charging station. If you move the robot vacuum cleaner manually during cleaning, it may not be able to find its way back to the charging station. For instructions on how to manually charge the robot vacuum cleaner, see [Manual charging](#) [► 40].

The robot can only be restarted when the battery charge level is at least 25 %.

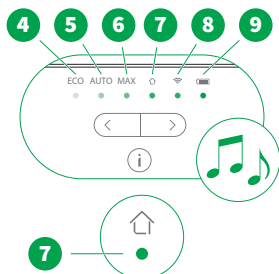
12.3.2 Manual charging

Robot vacuum cleaner cannot locate the charging station



The robot vacuum cleaner cannot find its way back to the charging station. **The Home LED is lit yellow** [► 29].

1. **Switch the robot vacuum cleaner on** [► 33].
2. Ensure that the charging station (1) **is connected to the power supply** [► 23].
3. With the robot vacuum cleaner (2) switched on, slide it onto the charging station (1) until you feel a slight click, but not right up to the infrared window.



4. The robot vacuum cleaner is in the correct position when there is a small gap (3) of approx. 1.5 cm between the infrared window and the robot vacuum cleaner.
 - ⇒ *The ECO, AUTO, MAX, Home, Wi-Fi and Battery LEDs (4-9) will immediately light up in succession and you will hear a beep.*
 - ⇒ **The Home LED (8) will remain green. This indicates that the robot vacuum cleaner is correctly positioned.**
 - ⇒ *During the charging process, the Battery LED (10) will pulsate until charging is complete. When the battery is fully charged, the Battery LED (9) will be permanently lit.*

The robot can only be restarted when the battery charge level is at least 25 %.

Robot's battery is fully discharged

The robot vacuum cleaner is fully discharged and will not switch on.

- To recharge the robot vacuum cleaner, follow the steps described in the section **Charging for the first time** [► 25].

13 Wi-Fi and app control using smart devices*

This feature is not available in all countries.

13.1 Technical requirements

To control the robot vacuum cleaner using the app, you will require the following:

Wi-Fi internet connection

- The robot vacuum cleaner supports the communication protocols of IEEE802.11 b/g/n in the 2.4 GHz Wi-Fi frequency band only. The supported encryption standards are WPA3 and WPA2-PSK. If you are not sure of the standards of your Wi-Fi and router, contact your internet provider or router manufacturer.
- Wi-Fi 6 (WLAN 6) is not supported. Wi-Fi 6-compatible routers are usually configured so that they are backwards compatible. Make sure that your router does not only allow Wi-Fi 6 connections.
- If you have activated a MAC address block in your router and wish to enable the robot vacuum cleaner, you can find the MAC address ('Robot ID') on the type plate on the underside of the robot vacuum cleaner.
- Mobile routers may lead to connection problems with the robot vacuum cleaner in isolated cases. If in doubt, avoid the use of mobile routers.

Smart devices

The MyKobold app is compatible with most standard smartphones and tablets with iOS or Android operating systems. For more detailed information on currently supported devices, see the MyKobold app page in the Google Play Store or the Apple App Store.

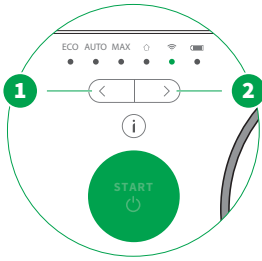
MyKobold app

For instructions on installing and using the app, see [Installing and pairing the MyKobold app](#) [► 27].

E-mail address

To ensure that only you can control your device via the app, you need to create an account in the MyKobold app using a valid e-mail address prior to use.

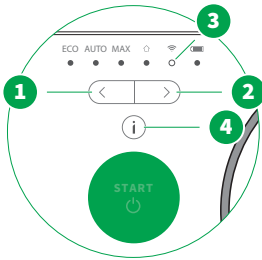
13.2 Establishing a Wi-Fi Connection



1. Connect the charging cable on the charging station. [► 23]
2. Position the robot vacuum cleaner on the charging station and make sure that the robot is switched on.
3. Activate the wireless interfaces (Wi-Fi, etc.) on your mobile device.
4. To establish a Wi-Fi connection, follow the instructions in the [MyKobold app](#) [► 27].

| Wi-Fi LED (9) | Status |
|-------------------|--|
| Solid white light | Wi-Fi on / not yet connected to home network |
| Solid green light | Wi-Fi on / connected to home network |
| Pulsating green | Looking for a connection |
| Flashing yellow | Connection problems |

13.3 Deleting Wi-Fi settings



1. To remove the robot from your Wi-Fi network, press the left or right selection key (1 or 2) until the *Wi-Fi LED* (3) flashes white.
2. Hold down the information button (4) for at least 10 seconds.
⇒ *The Wi-Fi settings are now reset. The Wi-Fi LED (3) will flash. The robot vacuum cleaner will show as being offline in the MyKobold app.*

Tip To reactivate, [connect your robot vacuum cleaner to your Wi-Fi again](#) [► 42].

14 Resetting

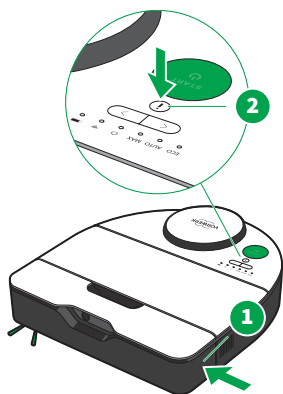
14.1 Resetting the robot vacuum cleaner to factory settings

If you reset the robot vacuum cleaner to its factory settings, you will delete data on the robot, such as the [Wi-Fi settings](#) [► 41].

To reset the robot vacuum cleaner to factory settings, proceed as follows.

1. Press and hold the left bumper (1) (viewed from above in the direction of travel). It is the bumper opposite the side brush.
2. In addition, press and hold the information button (2) together with the bumper (1) for at least 7 seconds.
⇒ *The robot vacuum cleaner will confirm that the reset was successful.*

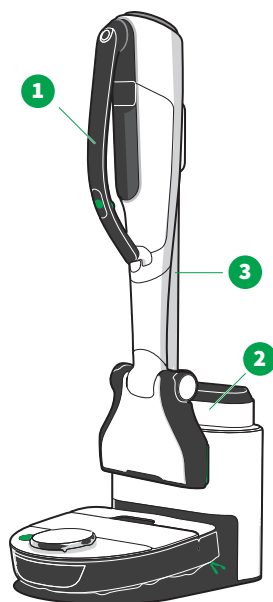
It will take a few more seconds for the robot to start reconfiguring after the factory reset.



14.2 Deleting a MyKobold account

To delete your account in the MyKobold app, follow the instructions in the app. You will find this option under 'Profile'. Deleting a profile will delete all existing data from the app and the cloud. No data will be deleted from the robot.

15 Pairing the emptying & charging station with the dual battery charger



You can pair the Kobold PC7 dual battery charger with the emptying & charging station. This system allows you to additionally charge and store a Kobold VK7 battery in the Kobold PC7 dual battery charger (2) and the Kobold VK7 cordless handheld vacuum cleaner (1) on the emptying & charging station.

For this, you need:

- a Kobold PC7 dual battery charger (2) and
- a Kobold ST7 mount for the RB7 station (3) (optional).

1. Always refer to the instruction manuals for other Kobold devices.
2. Please pay particular attention to the safety information.



For step-by-step instructions, please refer to the installation guide supplied with the Kobold PC7 dual battery charger.

16 Transportation

WARNING



Risk of fire!

If the device or battery are accidentally triggered or activated when in transit, this could cause a build-up of heat, which could lead to a fire.

- Follow the instructions in the manual to ensure safe transportation.

The device contains lithium-ion batteries, which are subject to dangerous goods regulations. You can transport the batteries by road (e.g. in your vehicle) without having to meet further requirements. Information on the number of cells and energy of the cells or battery can be found on the battery's data plate.

The device is delivered in transport mode and is therefore already secured against activation. This means that it can be safely shipped in the original packaging without the removal of the battery. Nevertheless, please observe points 1, 5 and 6. If you have started operating the device, transport mode is deactivated.

If the batteries are shipped by a third party (e.g. air freight or courier), you must comply with special requirements with regard to packaging and labelling.

1. Only ship batteries if the battery housing is undamaged. If you are in any doubt as to whether the battery is undamaged, do not ship the battery. If in doubt, consult a dangerous goods expert.
2. Make sure that you comply with all applicable national and international regulations before shipping the battery, especially when shipping by air freight. This also includes regulations on the permissible charge capacity of the battery for shipment.
3. Remove the battery by opening the cover on the dust container and unscrewing the 3 screws. [Remove the battery](#) [▶ 53] and screw the 3 screws back in.
4. Cover exposed contacts with insulating tape and pack the battery separately from the device in such a way that it cannot move inside the packaging. To obtain suitable original packaging, please contact customer service.
5. Always check with your shipping provider how to pack and label the package. This will depend on whether you are shipping the battery on its own or with the device, and whether the package is to be transported by air.
6. Ensure that you also comply with any additional national and international regulations.

17 Maintenance

CAUTION



Risk of injury from moving parts!

You could injure yourself on moving parts.

- Stay clear of moving parts.
- Never reach into the moving parts.
- Finish the cleaning cycle and lay the device upside down on a solid, level surface before you start to carry out maintenance on the brushes.

NOTICE



Risk of damage due to incorrect cleaning!

The device could get damaged if not cleaned correctly.

- Never clean the device with water, liquid cleaners or a wet cleaning cloth.
- Never wet-clean the roller brush. Use a dry or slightly damp cloth if necessary. The roller brush is not dishwasher safe or waterproof.
- Do not use abrasive cleaning pads, scouring agents or aggressive liquids such as benzene or acetone to clean the device.
- Do not use disinfectant to clean the device.

NOTICE



Risk of damage from improper use!

If you use the robot vacuum cleaner without a filter, it could damage the motor and shorten the service life of the device.

- Never use the device without a filter.

17.1 Spare parts and consumables

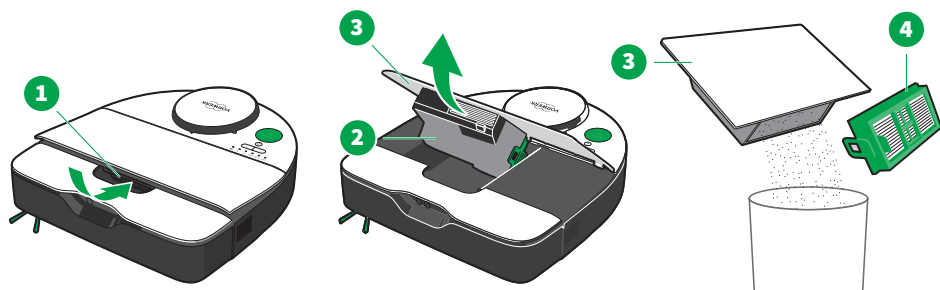
We recommend you take advantage of our reorder options for original care products and original consumables. For more information on the reorder options, see [Service](#) ► 66].

17.2 Maintenance of your robot vacuum cleaner

17.2.1 Regular cleaning of the robot vacuum cleaner

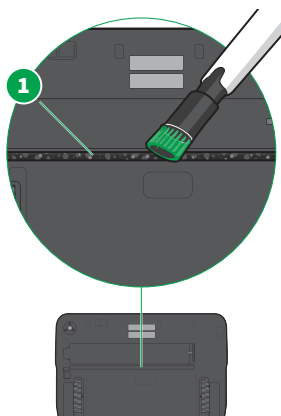
Clean the robot vacuum cleaner with a soft, clean cloth.

17.2.2 Emptying the dust container manually



1. Open the dust container by reaching into the recessed grip and pressing the release button with your hand (1).
2. Take the dust container (2) out of the robot vacuum cleaner by extracting it together with the cover (3).
3. Remove the filter (4) by pulling it out of the dust container by the green tab on the filter frame. [▶ 48]
4. Empty the dust container into a bin. Alternatively, you can clean out the dust container with a conventional vacuum cleaner.
5. Insert the dust container (2) with the filter into the robot vacuum cleaner [▶ 51].
6. Press down on the cover (3) and ensure that it is properly closed.

17.2.3 Cleaning the rear suction channel

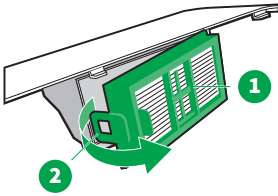


1. Place the robot vacuum cleaner upside down on a soft surface.
2. Remove the side brush and brush cover [▶ 51].
3. Vacuum out the rear suction channel (1) with a vacuum cleaner.
4. Put the brush cover and side brush [▶ 51] back into place.

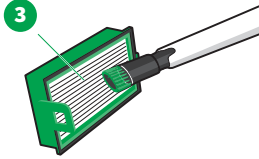
17.2.4 Cleaning the filter

Clean the filter at regular intervals.

1. Remove the filter (1) by pulling it out of the dust container by the green tab (2) on the filter frame.



2. Vacuum the filter on both sides with a conventional vacuum cleaner (3).



17.2.5 Replacing the filter

1. Regularly carry out visual inspections of the filter. Replace the filter if it is distorted or damaged.
2. Replace the filter if cleaning quality declines, and at least once a year.
3. Dispose of used filter bags in household waste.

17.2.6 Removing and replacing fragrance chips

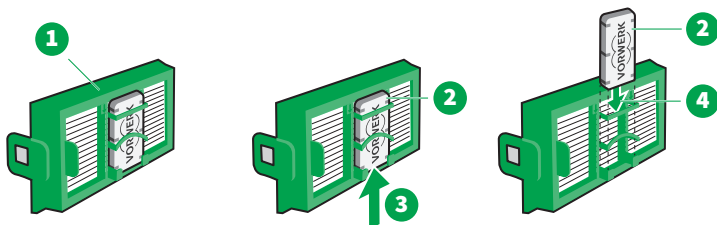
WARNING



Risk of choking!

Small parts may be accidentally swallowed and cause choking.

- Keep small parts such as fragrance chips out of the reach of children.



1. Remove the filter ► 47] (1).
2. Remove the old fragrance chip (2) by sliding it out of the fragrance-chip holder from underneath (3).
3. Slide the new fragrance chip (2) into the fragrance-chip holder from above (4) with the Vorwerk logo facing forwards.
4. Put the filter back in ► 51].

17.2.7 Removing, cleaning and inserting the motor protection filter

NOTICE

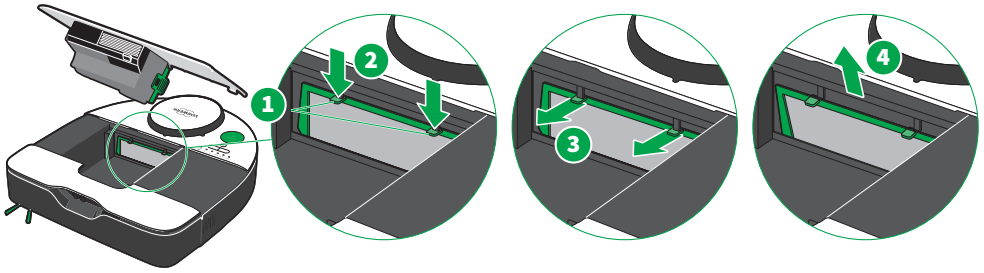


Risk of damage from improper use!

A damp motor protection filter can cause damage.

- If the motor protection filter is damp, let it dry out in a warm place for 24 hours before putting it back into the device.

Removing the motor protection filter



1. Remove the filter ► 47].
2. Hold the motor protection filter by the catches (1) and press it downwards (2).
3. Pull the motor protection filter forwards (3).
4. With the motor protection filter tilted forwards, pull it upwards to remove it (4).

Cleaning the motor protection filter

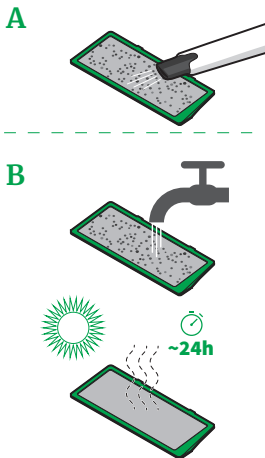
1. Clean the motor protection filter on both sides.

2. Option A

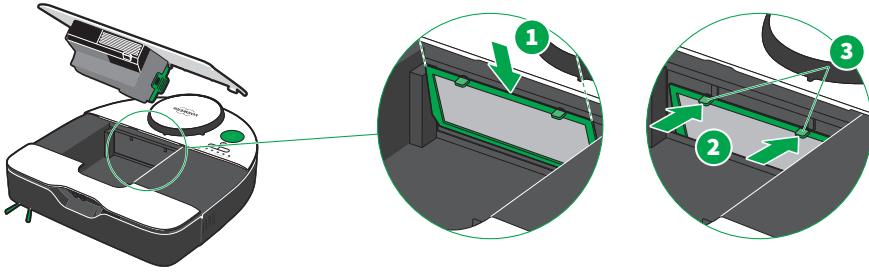
Clean the motor protection filter by vacuuming it on both sides with a vacuum cleaner.

Option B

Alternatively, rinse the motor protection filter under cold running water. Allow the motor protection filter to dry out completely in a warm place for 24 hours before putting it back into the robot vacuum cleaner.

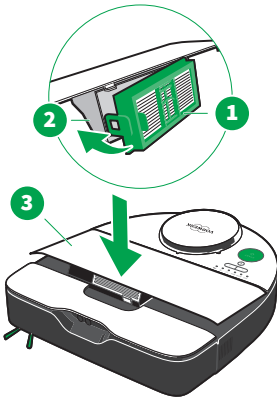


Inserting the motor protection filter



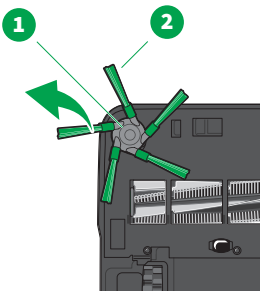
1. If the motor protection filter is damaged or extremely dirty, insert a new one.
2. To reinstall the motor protection filter, insert it into the holder from above (1).
3. Hold the motor protection filter by the catches (3) and press it backwards (2).

17.2.8 Reinstalling the dust container and filter



1. Put the filter (1) into the dust container (2). Hook the right-hand side of the filter into the dust container. Then, position the left-hand side of the filter with the green tab so that it clicks into place on the dust container.
2. Insert the dust container (2) with the filter into the robot vacuum cleaner.
3. Press down on the cover (3) until it is fully closed.

17.2.9 Cleaning the side brush

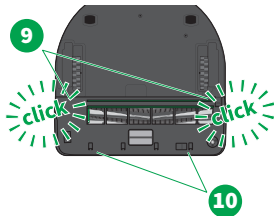
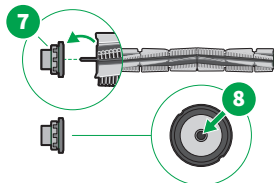
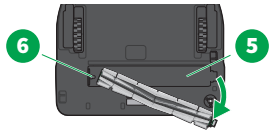
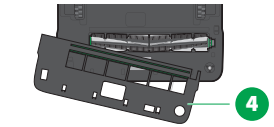
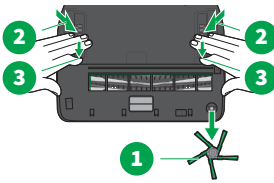


1. Place the robot vacuum cleaner upside down on a soft surface.
2. Holding the green bristles (2) with both hands, pull the side brush (1) up and away from the drive axle.
3. Remove any dust and dirt from the side brush.
4. Remove any lint, hair or other dirt from the drive axle.
5. You may need to remove the brush cover for this [► 52].
6. Ensure that the brush cover is fitted before you reinstall the side brush.

7. Press the side brush back into position on the drive axle to install it.

17.2.10 Cleaning the roller brush

Clean the roller brush if hair or threads have become wrapped around it.



1. Place the robot vacuum cleaner upside down on a soft surface.
2. Remove the side brush [► 51] (1).
3. Press the wheels (2) down and push the latches (3) on each side of the brush cover forward at the same time with two fingers to unlock the brush cover.
4. Remove the brush cover (4). Vacuum out the brush cover if it is dirty.
5. First lift the right-hand side of the roller brush out of the brush channel (5) and then pull the left-hand side away from the axle (6) to remove the roller brush.
6. Vacuum out the brush channel if it is dirty.
7. Remove the yellow protective cap with the metallic attachment (7) on the left-hand tip of the roller brush. Make sure that the bearing inside (8) does not come loose.
8. Remove lint, hair and dirt from the roller brush.
9. To reinstall the roller brush, follow the steps above in reverse order.
10. To reinstall the brush cover, insert it first at the front (10) and then at the back (9) by the wheels.
11. Make sure that **all** latches (9 and 10) lock into place when installing the brush cover.
 - ⇒ You will hear the rear latches (9) clicking into place.
 - ⇒ With the front ones (10), it is important that there is **no** sizeable gap, particularly where the charging contacts are on the underside of the robot vacuum cleaner. Only then is the brush cover correctly installed.

17.2.11 Cleaning the sensors

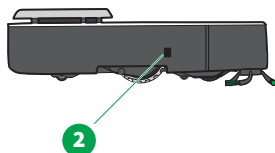
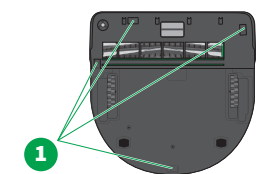
WARNING



Risk of serious injury!

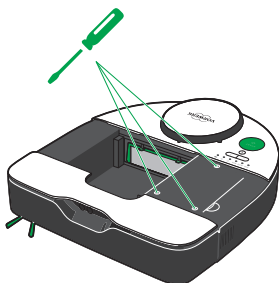
If the floor sensors are covered or dirty, the device may fall down stairs or landings.

- Before starting the robot, remove easily moveable items, including rugs or runners, as well as lightweight, loose objects from the area in which the robot will be operating. Such objects may be pushed along in front of the robot vacuum cleaner, thereby obstructing its floor sensors.
- Clean the floor sensors regularly (every time the dust container is emptied).



1. Clean the floor sensors (1) on the underside of the robot vacuum cleaner with a cotton bud or a soft, clean cloth, but never with pointed or sharp objects.
2. If required, you can also clean the area around the sensors with a vacuum cleaner if very dirty.
3. Clean the wall-following sensor (2) on the right-hand side with a cotton bud or a soft, clean cloth.
4. Clean the sensors (3) on the front of the robot vacuum cleaner with a cotton bud or a soft, clean cloth, but never with pointed or sharp objects.

17.2.12 Removing or changing the battery



1. Open the cover on the dust container [► 47].
2. Unscrew the 3 screws on the battery.
3. Remove the battery by carefully lifting it out of the battery compartment.
4. Insert the new battery into the battery compartment.
5. Tighten the 3 screws again to secure the battery.
6. Close the robot vacuum cleaner again by pressing the cover on the dust container down, making sure that it is closed properly.

Only change the battery if the battery performance has diminished or if the battery is damaged.

17.3 Maintenance of the emptying & charging station

Important You will move the emptying & charging station away from its usual location to carry out maintenance. To ensure that the robot vacuum cleaner can find its way back to it afterwards, it is best to mark the position of the emptying & charging station. This will ensure that you return the emptying & charging station to exactly the same location.

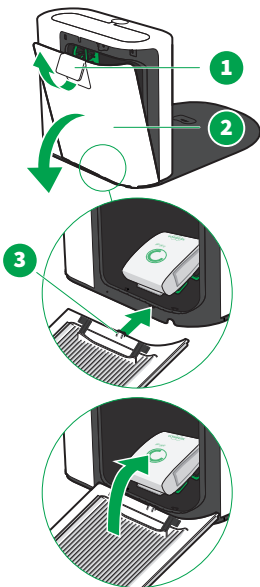
17.3.1 Opening and closing the filter cover

Opening the filter cover

1. Lift up the release lever (1) to remove the filter cover (2).
2. Fold down the filter cover fully.
From this position, you can remove the filter cover from the emptying & charging station.

Putting the filter cover on

1. Insert the small catches (3) on the filter cover (which is pivoted open) horizontally into the openings at the base of the device.
2. Close the filter cover (2) by pressing gently and close the release lever on the filter cover.
3. When putting the filter cover back on, make sure that the premium filter bag does not get caught between the cover and the seal.
4. Do not use force if it is difficult to close the filter cover. Make sure that the premium filter bag is correctly inserted.



17.3.2 Inserting and changing the premium filter bag

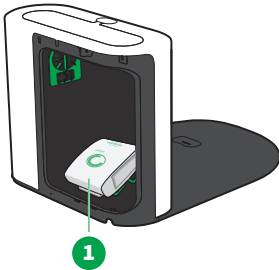
CAUTION



Loss of suitability for allergy sufferers and risk of damage from improper use!

Unsuitable or damaged filter material will not retain fine, allergenic particles.

- Only use the original Kobold products that are intended to be used with this device.
- Do not reuse spent Kobold premium filter bags.
- Only use the device with an original Kobold premium filter bag installed.



1. **Open the filter cover** ► 54].
2. Remove the old premium filter bag by removing it from its holder, and dispose of it in household waste.
3. Insert a new, folded premium filter bag (1) into the filter compartment.
4. Do not cut through the sleeve around the premium filter bag, as this will be done by the filter cover when you close it.
5. Make sure that the premium filter bag does not get caught between the filter cover and the seal.
6. **Close the filter cover** ► 54].

Note Some resistance will be felt when the cover latch engages with the sleeve and cuts through it. After that, no resistance will be felt as the sleeve has already been detached.

WARNING



Risk of electric shock!

If water gets into the electrical components, you could get an electric shock.

- The emptying & charging station is connected to the power supply. Before you start cleaning the emptying & charging station, ensure that the device is disconnected from the power.
- The emptying & charging station is connected to the power supply. Therefore, only clean the filter compartment and the sealing surfaces around the filter bag and around the robot vacuum cleaner with a slightly damp (not soaking wet!) cloth, if necessary.
- Never clean the remaining areas of the emptying & charging station, including the power cord, with water, liquid cleaners or a wet cleaning cloth.
- Never clean the mains plug on the charging station with water, liquid cleaners or a wet cleaning cloth.
- Do not use the charger or charging unit in damp environments.
- Never immerse the charger or charging unit in water or other liquids.
- Never pour water over the charger or charging unit.
- Do not hold the charger or charging unit under running water.
- Do not touch the charger or charging unit with wet hands.

WARNING



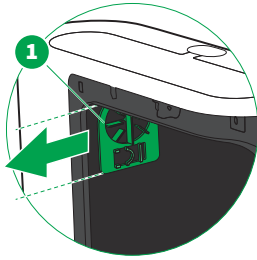
Risk of electric shock!

Carrying out cleaning when the charger is still plugged in could cause an electric shock.

- Disconnect the charger and/or connection cable for the charger from the power socket before cleaning.
1. Disconnect the charging station from the power.
 2. [Open the filter cover](#) [► 54].
 3. [Remove the premium filter bag](#) [► 55].
 4. Lightly wipe the sealing surface around the premium filter bag and filter compartment with a damp cloth.
 5. Carefully wipe the seals around the suction opening on the robot vacuum cleaner.
 6. If coarse particles (e.g. small stones) have collected in the suction channel on the emptying & charging station, vacuum the suction channel using a crevice nozzle.

7. Make sure that the emptying & charging station is completely dry before you close it again.
8. Put the premium filter bag back in [► 55].
9. Close the filter cover [► 54].

17.3.4 Removing, cleaning and inserting the motor protection filter



The motor protection filter (1) shields your device from contaminants. To ensure the long service life of the charging station, it is important to carry out visual checks and maintenance on the motor protection filter at regular intervals. The motor protection filter can be cleaned as many times as necessary. It must only be replaced if the premium filter bag has been damaged or if the motor protection filter is extremely dirty or gummed up.

The motor protection filter is held in two places in the filter compartment on the device. It is easy to remove, clean and re-insert the motor protection filter when the premium filter bag is not installed.

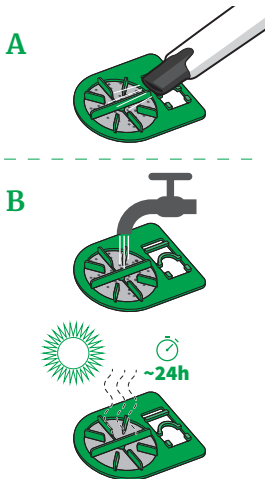
1. Open the filter cover [► 54].
2. Remove the premium filter bag.
3. Take hold of the motor protection filter (1) in the middle and pull it out.
4. Clean the motor protection filter.

Option A

Clean the motor protection filter by vacuuming it on both sides with a vacuum cleaner.

Option B

Alternatively, rinse the motor protection filter under cold running water. Allow the motor protection filter to dry out completely in a warm place for 24 hours before putting it back into the emptying & charging station.



5. If the motor protection filter (1) is damaged or extremely dirty, insert a new one.
6. To re-insert the motor protection filter (1), slide it back in on the guide rails.
7. Put the premium filter bag back in.
8. Close the filter cover [► 54].

17.3.5 Removing and replacing the fragrance chip

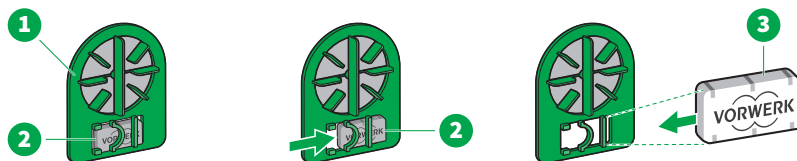
WARNING



Risk of choking!

Small parts may be accidentally swallowed and cause choking.

- Keep small parts such as fragrance chips out of the reach of children.



1. Open the filter cover ► 54].
2. Remove the motor protection filter ► 57] (1).
3. Remove the old fragrance chip (2) by sliding it out of the fragrance-chip holder from the side.
4. Slide the new fragrance chip (3) into the holder on the motor protection filter from the side, with the Vorwerk logo facing forwards.
5. Put the motor protection filter back in ► 57].
6. Close the filter cover ► 54].

18 Software update

The software for the robot vacuum cleaner undergoes further development and optimisation when required. To ensure that you benefit from these improvements, the latest versions of the software are available via our app.

Subscribers to our newsletter will receive regular updates and information.

It is also possible to manually install software updates. This requires a premium-quality USB-C cable. The latest software version is available at www.support.vorwerk.com.

You can of course also have new versions of the software installed at our Service Centers. For locations and opening hours, please visit our website or call our [customer hotline](#) ► 66].

19 Troubleshooting

WARNING



Risk of fire or electric shock!

If incorrect repairs are performed on the device or corresponding charger/charging unit, this may cause a fire or electric shock.

- Never attempt to repair the device yourself.
- Repairs to electrical appliances may only be carried out by a Vorwerk customer service centre, a workshop authorised by Vorwerk or a person with similar qualifications in order to avoid hazards.
- Defective parts may only be replaced by original replacement parts in order to avoid hazards.
- In the event of damage to your device, contact Vorwerk customer service.
- Only operate the charger/charging unit on a connection that has been properly installed by a qualified electrician.
- Do not attempt to open the charger and repair it yourself. The charger has live parts inside and is not a serviceable component.

If your device is not working properly, it could be due to one of the following reasons:

19.1 Faults

| Fault | Possible cause and rectification |
|---|--|
| The cleaning performance of the robot vacuum cleaner has decreased. | <p>The dust container is probably full.</p> <ul style="list-style-type: none">– Empty the dust container and clean or replace the filter. <p>The brushes are dirty.</p> <ul style="list-style-type: none">– Clean the side brush [► 51] and roller brush [► 52]. |
| The robot vacuum cleaner is not responding. | <p>The battery may be empty.</p> <ul style="list-style-type: none">– Charge the robot vacuum cleaner on the charging station [► 25].– Make sure that the plug is properly connected to the jack on the charging station.– Also make sure that the mains plug is properly connected to the power socket. <p>The robot vacuum cleaner may not be switched on.</p> <ul style="list-style-type: none">– Check whether the robot vacuum cleaner is switched on. If not, press the START button. <p>The robot vacuum cleaner's battery will discharge if it is docked on a charging station that is not connected.</p> |

| Fault | Possible cause and rectification |
|--|---|
| The robot vacuum cleaner is off and cannot be switched on again. | <p>The robot vacuum cleaner may be in transport mode.</p> <ul style="list-style-type: none"> – Charge the robot's battery. [► 25] <p>If the robot vacuum cleaner is not in transport mode, it may be completely discharged.</p> <ul style="list-style-type: none"> – Ensure that the charging station is connected to the power supply. – Place the robot vacuum cleaner on the charging station. – Wait a few seconds for the initialisation to complete. <i>The ECO, AUTO, MAX, Home, Wi-Fi and Battery LEDs will light up in succession and you will hear a beep. If the Home LED remains green, the robot vacuum cleaner is connected correctly. If the Home LED is lit yellow, you have pushed the robot vacuum cleaner too far forward and must bring it slightly further back.</i> – If the robot vacuum cleaner does not automatically switch on after a few seconds, press the START button for several seconds. |
| The robot vacuum cleaner is not charging. | <p>The charging station and/or robot vacuum cleaner may not be properly connected to the power supply.</p> <ul style="list-style-type: none"> – Make sure that the plug is properly connected to the jack on the charging station. – Make sure that the mains plug is properly connected to the power socket. – Make sure that the robot vacuum cleaner is correctly positioned on the charging station [► 40]. If the robot vacuum cleaner is correctly positioned, the <i>HOME</i> LED will be a solid green light. <p>The charging contacts on the charging station may be dirty or jammed.</p> <ul style="list-style-type: none"> – Make sure that the charging contacts are not jammed. – Make sure that the brush cover is correctly closed. [► 52] – If the charging contacts are dirty, clean them. <p>The brush cover may not have been fitted straight.</p> <ul style="list-style-type: none"> – Put the brush cover on correctly. |
| The robot vacuum cleaner suddenly stops cleaning. | <p>The sensors may be covered or dirty.</p> <ul style="list-style-type: none"> – Make sure that the sensors are not covered. – Clean the sensors [► 53] with a soft, clean cloth or cotton bud if they are dirty. <p>In large, empty rooms, navigation may be impaired if there are no furnishings or walls within a radius of 2 – 3 metres.</p> <ul style="list-style-type: none"> – Place objects or furniture in the room to serve as fixed reference points [► 22]. |

| Fault | Possible cause and rectification |
|---|---|
| | <p>On thick pile carpets, the wheels of the robot vacuum cleaner may spin, which can lead to navigation errors.</p> <ul style="list-style-type: none"> – Section off the carpet using no-go zones in the MyKobold app. <p>If the sensors are dirty, the robot vacuum cleaner may interpret dark or dense carpets as a drop-off. Glass floors are generally interpreted as a drop-off.</p> <ul style="list-style-type: none"> – Clean the floor sensors regularly. |
| The robot vacuum cleaner is not working as expected. | <p>You may have customised your robot vacuum cleaner using the app (e.g. no-go zones).</p> <ul style="list-style-type: none"> – Check the app for the settings you have selected. |
| The robot vacuum cleaner is not returning to the charging station after cleaning. | <p>The infrared window on the charging station may be covered.</p> <ul style="list-style-type: none"> – Make sure that you have removed the protective film from the infrared window on the charging station. <p>You may have started the cleaning process in normal cleaning mode from a location other than the charging station.</p> <p>If you start the robot vacuum cleaner at a different location in the room, it returns there after cleaning.</p> <ul style="list-style-type: none"> – Start the robot vacuum cleaner from the charging station if you would like it to stop cleaning there. <p>Cleaning may have been interrupted, and the robot vacuum cleaner may have been switched back on in a different place in the room.</p> <p>The sensors on the charging station or several sensors on the robot vacuum cleaner may be covered or dirty [► 46].</p> <ul style="list-style-type: none"> – Remove the objects covering the sensors on the robot vacuum cleaner and clean the sensors. <p>The charging station may be located behind a wall or other obstacle that is blocking the signal.</p> <ul style="list-style-type: none"> – Set up the charging station in a different location. – Make sure that there are no obstacles within 0.5 metres on either side of the charging station. |
| The emptying & charging station is blocked. | <p>The robot vacuum cleaner may not have been manually cleaned at regular intervals.</p> <ul style="list-style-type: none"> – Clean the robot vacuum cleaner [► 46]. – Change the premium filter bag [► 55]. – Clean the emptying & charging station [► 56]. |
| The roller brush is jammed. | <p>The robot vacuum cleaner may be on a long-pile carpet.</p> <ul style="list-style-type: none"> – Start the robot vacuum cleaner on a hard floor. – Section off the carpet using no-go zones in the MyKobold app. <p>Hairs or threads may be obstructing the roller brush.</p> <ul style="list-style-type: none"> – Clean the roller brush [► 52]. |

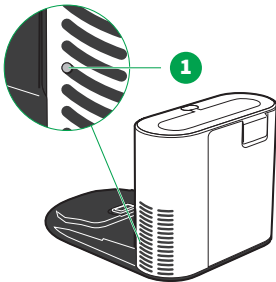
| Fault | Possible cause and rectification |
|-------|--|
| | <p>Rug fringes may have got caught.</p> <ul style="list-style-type: none"> – Release the fringes from the brush. – Section off the carpet using no-go zones in the MyKobold app. |

If the fault cannot be rectified, please contact [Vorwerk customer service](#) [► 66].

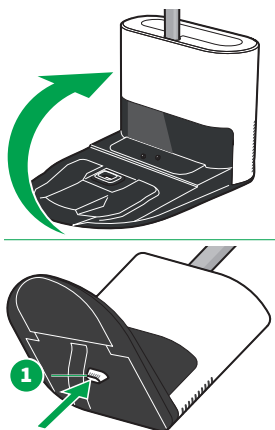
19.2 Emptying & charging station

| Fault | Possible causes and rectification |
|--|---|
| The white LED (1) on the outlet grille of the emptying & charging station is not lighting up after plugging in the power cord. | <p>The emptying & charging station may not be properly connected to the power supply.</p> <ul style="list-style-type: none"> – Make sure that the plug is properly connected to the jack on the emptying & charging station. – Make sure that the mains plug is properly connected to the power socket. |

| | |
|--|---|
| The LED (1) on the outlet grille is lit red. | <p>There may be a fault.</p> <ul style="list-style-type: none"> – Disconnect the mains plug on the emptying & charging station from the power socket, and wait for about 60 seconds before plugging it back in again. If the error persists, please contact customer service [► 66]. |
|--|---|



| | |
|---|--|
| The ST7 mount cannot be removed from the emptying & charging station. | <ul style="list-style-type: none"> – Carefully lay the emptying & charging station on its back. – Press the button (1) on the underside of the emptying & charging station and remove the ST7 mount. |
|---|--|



The information button on the robot vacuum cleaner is lit yellow.

The premium filter bag in the emptying & charging station may be full. You will be informed of this via the robot's voice response.

- **Change** [► 55] the premium filter bag in the emptying & charging station.

The information button on the robot vacuum cleaner is lit red.

This may be due to one of the following problems. The robot's voice response will inform you what the problem is.

The premium filter bag in the emptying & charging station has reached a critical fill level.

- **Change** [► 55] the premium filter bag in the emptying & charging station.

The filter cover on the emptying & charging station is not closed properly.

- **Ensure that the filter cover closes properly** [► 54].

The robot vacuum cleaner is not charging.

Check whether the robot vacuum cleaner is correctly docked on the charging station

20 Disposal and environmental protection

20.1 Disposal of the device



This symbol means that electrical and electronic appliances may not be disposed of in household waste. You can return your old electrical appliances to a municipal collection point free of charge.

20.2 Disposal of batteries

The lithium-ion battery contains substances that can be harmful to the environment. Before scrapping the device, the battery must be removed. Only dispose of batteries that are completely empty. The contacts on the battery must not come into contact with metal under any circumstances and should be covered with insulating tape prior to disposal.



The crossed-out bin symbol depicted on a battery or on a rechargeable battery means that the battery/rechargeable battery must not be put into household waste.

The separate collection of old batteries and rechargeable batteries is intended to enable correct recycling and to prevent negative effects on health and the environment.

Batteries and rechargeable batteries must not be disposed of in household waste. You are legally required to return all used batteries and rechargeable batteries.

20.3 Disposal of premium filter bags and robot vacuum cleaner filters

Dispose of premium filter bags and robot vacuum cleaner filters in household waste.

20.4 Disposal of the packaging

The packaging is an important part of the product. It protects our devices against damage in transit and reduces the risk of a fault. For that reason, we cannot avoid using packaging. The original packaging provides the best protection against damage in transit if you need to send your device to our customer service department.

If you want to dispose of the packaging, please use regional collection points such as waste-paper and recycling containers.

21 Warranty

Any warranty services can be found in the order note or purchase contract.

22 Service

For more information, please speak to our UK & Ireland Customer Care team, either by calling +44 330 6600 834 (Monday to Friday 09:00 – 17:00) or sending an email to info@vorwerk.co.uk.

23 Technical Data

23.1 Robot vacuum cleaner

Kobold VR7 robot vacuum cleaner

Safety symbols



| | | | |
|--|---|-----------------------|----------|
| Housing | high-quality, recyclable plastic | | |
| Fan motor | maintenance-free DC motor | | |
| Volume flow | 10 l/s | | |
| Consumption | total approx. 70 W (depending on floor covering) / approx. 54 W (ECO mode) | | |
| Weight | approx. 5 kg | | |
| Sound power level | 72 dB (A) re 1 pW (on carpet) | | |
| Battery | Rechargeable lithium-ion battery Type designation: BATTERY PACK... Capacity/energy: < 100 Wh Technical data: See battery type plate The battery meets the requirements of the UN Manual of Tests and Criteria, Part III, UN 38.3. | | |
| Battery charge times | after max. 1 hour: cleaning is possible again. after 3.5 – 4 hours: full charging of completely empty battery. Times may vary depending on the pretreatment of the battery and the ambient conditions. | | |
| Battery charging cycles / battery life | approx. 70% capacity after approx. 800 full cycles | | |
| Information on connectivity | 2.4 GHz | 2.412 GHz – 2.472 GHz | < 20 dBm |
| | 2.4 GHz | 2.402 GHz – 2.480 GHz | < 10 dBm |
| VR7 software licence | Connect switched-on VR7 to PC via USB-C. Licence can be retrieved under the VR7's device name 'Vorwerk Robot' in the subfolder 'SW Update' https://support.vorwerk.com/hc/en-us/articles/8137040801436 | | |

Laser radiation according to IEC 60825-1:2014

| | |
|----------------|----------|
| Wavelength | 783.1 nm |
| Pulse duration | 82 µs |
| Average power | 4.54 µW |

Operation


| | |
|---------------------|---------------|
| Ambient temperature | 10 °C ~ 35 °C |
|---------------------|---------------|

Storage

| | |
|---------------------|--------------|
| Ambient temperature | 5 °C ~ 35 °C |
|---------------------|--------------|

23.2 Solo charging station



Kobold CB7 solo charging station

| | |
|--|---|
| Mains charger type | S030BB... |
| Safety symbols |  |
| Input voltage | 100-240 V AC |
| Input AC frequency | 50/60 Hz (automatic adjustment) |
| Output voltage | 19.5 V DC |
| Output current | 1.5 A |
| Output power | 29.95 W |
| Average active efficiency | > 86.9 % |
| Efficiency at low load (10 %) | > 83 % |
| Power consumption at zero load | < 100 mW |
| Power consumption of robot vacuum cleaner on charging station in off state | 0.1 W |
| Power consumption of charging station in standby * | 0.1 W |
| Power consumption of charging station in networked standby * | 0.1 W |

* Standby occurs immediately after charging

23.3 Emptying & charging station

Kobold RB7 emptying & charging station

| | |
|--------------------------------|---|
| Safety symbols |   |
| Housing | High-quality, recyclable plastic |
| Motor | maintenance-free SR motor |
| Fan | single-stage fan |
| Input voltage | 220-240 V AC |
| Input AC frequency | 50/60 Hz (automatic adjustment) |
| Output voltage | 19.5 V DC |
| Output current | 1.5 A |
| Output power | < 30 W |
| Volume flow | ≥ 20 l/s |
| Power consumption at zero load | < 0.5 W |
| Power consumption on standby | < 2 W |
| Weight | approx. 4.5 kg |

Kobold RB7 emptying & charging station

| | |
|-------------------|------------------|
| Sound power level | 80 dB(A) re 1 pW |
|-------------------|------------------|

| | |
|------|-----|
| Type | RB7 |
|------|-----|

| | |
|--|-------|
| Power consumption of robot vacuum cleaner on charging station in off state | 0.4 W |
|--|-------|

| | |
|--|-------|
| Power consumption of charging station in standby * | 0.4 W |
|--|-------|

| | |
|--|-------|
| Power consumption of charging station in networked standby * | 0.4 W |
|--|-------|

* Standby occurs immediately after charging

23.4 Manufacturer and Importer

Manufacturer

Vorwerk Elektrowerke GmbH & Co. KG
Mühlenweg 17-37
42270 Wuppertal
Germany

Importer

Vorwerk UK Limited
Ashurst Manor
Church Lane
Ascot
SL5 7DD

24 Declaration of Conformity

Vorwerk Elektrowerke GmbH & Co. KG hereby declares that the radio equipment type Kobold VR7 robot vacuum cleaner is in compliance with the Directive 2014/53/EU. The full text of the EU declaration of conformity is available on the following websites:
<https://www.vorwerk-group.com/de/home/meta/eu-konformitaetserklaerung>
<https://www.vorwerk-group.com/en/home/meta/ec-declaration-of-conformity>

