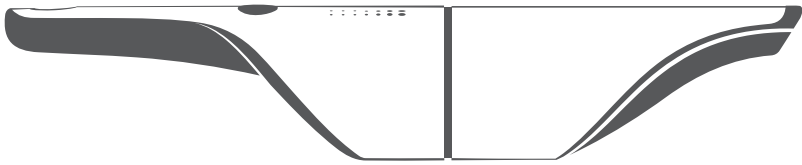


kobold

VC100



User manual



Table of Contents

1	Before you start	19
1.1	Storing of Product Documentation	19
2	Product overview.....	19
3	For Your Safety	19
3.1	Hazards and safety instructions	20
3.2	Classification of Safety Warning Messages.....	23
3.3	Obligations of the user.....	23
4	Intended use	24
5	Before you start	24
6	Operation	25
6.1	Charging	25
6.2	Switching on and off	25
6.3	Boost function.....	26
6.4	Function indicator.....	26
6.5	Storage	26
7	Maintenance	26
7.1	Cleaning the filter.....	26
8	Troubleshooting	27
9	Disposal.....	27
9.1	Disposal	27
9.2	Information on the disposal of the batteries	27
10	Warranty	28
11	Service	28
12	Technical data	28
12.1	Manufacturer.....	29

1 Before you start

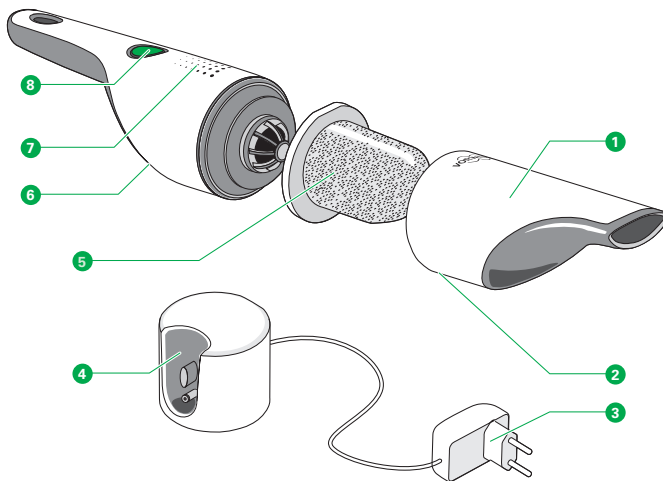
Congratulations on the purchase of your new Kobold device.

- Read the instruction manual carefully before using the device for the first time.

1.1 Storing of Product Documentation

- Retain this instruction manual for future reference. It is an important part of the appliance and must be kept with it if you pass it on to someone else.

2 Product overview



1	Dust chamber	5	Filter unit
2	Release key for dust chamber	6	Air outlet
3	Mains charger	7	Function indicator
4	Charging unit	8	Activation/deactivation with boost function

3 For Your Safety

Safety is an essential part of every Vorwerk product. However, product safety can only be ensured if this chapter and the warning notices in the following chapters are followed.

3.1 Hazards and safety instructions

Risk of fire or electric shock!	If incorrect repairs are performed on the device and the corresponding power supply, this may cause fire or electric shock. <ul style="list-style-type: none">• Never attempt to repair the device yourself.• Repairs to electrical devices may only be carried out by a Vorwerk customer service centre, a workshop authorised by Vorwerk or a person with similar qualifications in order to avoid hazards.
Risk of electric shock!	If water gets into the electrical components, you could get an electric shock. <ul style="list-style-type: none">• Never clean the mains charger with water or damp cleaning agents.• Do not use the mains charger in damp environments.
Risk of fire or explosion!	If burning or readily ignitable substances should enter the interior of the device, this may cause fire or an explosion. <ul style="list-style-type: none">• Do not vacuum hot ash or burning cigarette ends.• Do not vacuum up explosive or readily inflammable substances.
Risk of electric shock!	Improper use of the device could cause an electric shock. <ul style="list-style-type: none">• Do not insert any sharp objects into the electrical contacts.• Do not modify the electrical contacts.• In the event of damage, contact Vorwerk customer service.
Risk of electric shock!	Using a damaged mains charger or carrying out cleaning when the mains charger is still plugged in could cause an electric shock. <ul style="list-style-type: none">• Disconnect the mains charger from the power socket before cleaning.• Stop using the mains charger if it is damaged.
Risk of electric shock!	Drilling holes in a wall could result in an electric shock. <ul style="list-style-type: none">• When drilling (especially near a power socket), take particular care to ensure that you do not drill through an electric cable.
Risk of electric shock!	If repairs to the mains charger are not carried out correctly, it could cause an electric shock. <ul style="list-style-type: none">• Do not attempt to open the mains charger and repair it yourself. The mains charger has live parts inside and is not a serviceable component.

Fire hazard!

The device may start to burn if exposed to heat or as a result of improper use.

- The handheld vacuum cleaner and all its accessories (especially the battery pack) must never be put onto an open fire or heated by an external heat source.
- Stop using the device if it has fallen on the floor and shows visible signs of damage or appears to be defective.
- Do not short-circuit the battery pack under any circumstances.

Risk of injury when carrying out work on the device!

If the device is not switched off, you could injure yourself on individual components.

- Always switch the device off before all retrofitting, cleaning and maintenance work.

Risk of injury due to sharp fragments of plastic!

Broken plastic may be sharp and cause injury.

- Do not use the device if plastic components have been damaged due to falling or impacts.
- Protect yourself against fragments with sharp edges.

Risk of injury from leaking batteries!

Leaking batteries could cause injury.

- Leaking batteries must not come into contact with the eyes or mucous membranes.
- Wash your hands and rinse your eyes with clean water.
- If irritation persists, seek medical attention.

Risk of damage to the device!

Moisture in the interior may damage the device.

- Do not vacuum liquids or damp dirt.
- Do not vacuum damp floor mats or carpets.
- Do not use the device in damp environments (in wet bathrooms or outdoor areas, etc.) or in places where there is a risk that the device could come into contact with liquids.
- Never pour water over the device.
- Do not hold the device under running water.
- Never immerse the device in water or other liquids.
- Never clean your device with water or damp cleaning agents.
- Never store the device outdoors.
- Store the device such that it is protected from moisture.

Risk of damage from improper use!

Improper use of the device may damage it.

- To charge the device, only use the original mains charger supplied by Vorwerk in the scope of delivery.
- Only operate the mains charger with the alternating current voltage and mains frequency stated on the type plate.
- Only operate the mains charger on a connection that has been properly installed by a qualified electrician.
- Never carry the mains charger by the charging cable.
- Never remove the mains charger from the socket by pulling the charging cable.
- The device is only suitable for indoor use.
- Do not leave the device unattended while it is running, and switch it off after every use.
- Never block the air outlets while vacuuming.
- When removing the filter, dust may fall out of the dust chamber. For this reason, it is advisable to hold the dust chamber with the nozzle pointing downwards.

Risk of damage to the battery!

Incorrect use of the battery could damage it.

- Do not attempt to remove the battery and replace it with other batteries.
- Fully charge the device at least once a year in order to prevent deep discharge, which can damage the battery.

Risk of damage to the battery!

Incorrect use of the battery could damage it.

- Do not attempt to remove the battery and replace it with other batteries.
- Fully charge the device at least once a year in order to prevent deep discharge, which can damage the battery.

Risk of damage to the battery!

Extreme heat or cold shortens the charge time and/or can cause damage to the battery.

- Do not expose the device to fire, heat or direct sunlight.
- Do not leave the device near a heat source (oven, heater or hot radiator).
- Use and charge the device at temperatures between 5 °C and 35 °C.
- Store the device at temperatures between 5 °C and 35 °C.

Risk of damage to the device!

If the device is not in perfect condition, this may cause damage.

- Only use original Vorwerk products.
- Do not operate the device if the device itself or the power cord is damaged or if the device is not fully assembled.
- Only use the handheld vacuum cleaner with the original filter unit installed.

3.2 Classification of Safety Warning Messages

The safety warning messages in this manual are highlighted by safety symbols and signal words. The symbol and signal word indicate the severity of the potential hazard.

Classification of safety warning messages

The safety warning messages that precede each action are shown as follows:

WARNING



Type and source of hazard

Explanation of type and source of hazard/consequences

- Measures to prevent hazard

Meaning of signal words

WARNING	Risk of death or serious injury if hazard is not avoided.
CAUTION	Risk of minor injury if hazard is not avoided.
NOTICE	Material damage if hazard is not avoided.

Meaning of safety symbols



Safety warning message indicating the severity of the potential hazard



Reference to material damage

3.3 Obligations of the user

To ensure that your appliance and Vorwerk accessory operate correctly, please follow the guidelines below:

1. Please read the instruction manual and all accompanying documents carefully.

2. Store the manual in a safe place near the appliance.
3. Ensure that any damage to the appliance is repaired by the manufacturer without delay.

4 Intended use

Use the device and accessories only for their intended purpose in order to prevent risks to you and other people and to prevent damage to the device or to other property and equipment.

Kobold VC100 Handheld Vacuum Cleaner

The Kobold VC100 handheld vacuum cleaner is intended for household and domestic use only.

These devices can be used by children aged 8 years and older as well as by people with reduced physical, sensory or mental capabilities or lack of experience and knowledge if they are supervised and have been given supervision or instruction concerning use of the respective device in a safe way and understand the hazards involved.

Children should not play with the device. Cleaning and user maintenance should not be carried out by children unless they are 8 years of age or older and supervised.

This appliance may only be used for its intended purpose. No other use is permitted. The manufacturer bears no responsibility for damages resulting from improper use. If the appliance is subject to technical modifications, the warranty and liability for material defects shall be rendered invalid. If technical modifications are made to the product, the manufacturer's obligation to compensate for product liability and/or the dealer's obligation to compensate for material defects shall no longer apply.

When working with the device, please observe all the accompanying documentation as well as the device display. The manufacturer accepts no liability for damages resulting from improper use.

The device complies with the safety regulations of the country in which it has been sold by an authorised Vorwerk organisation. If the device is used in another country, compliance with the local safety standards cannot be guaranteed. Vorwerk therefore assumes no liability for any resulting safety risks for the user.

5 Before you start

- The handheld vacuum cleaner must be fully charged before first use.

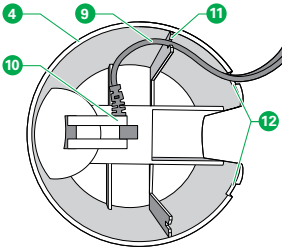
Mounting the charging unit on a wall

You need a screw to fix the charging unit to the wall. Select the appropriate fixing for the wall type.

1. Fasten the screw to the wall. Ensure that the distance to the floor is at least 50cm.

Placing the charging unit on a level surface

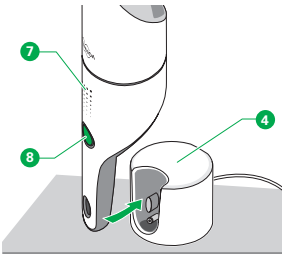
Connecting the mains cable



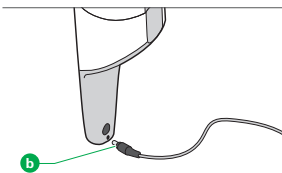
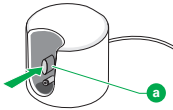
2. Position the charging unit on the wall so that the designated opening fits over the screw.
 - You can also position the charging unit on a level surface.
1. Plug the mains cable (9) into the designated charging socket (10) on the underside of the charging unit (4).
2. This is done by feeding the mains cable (9) through the designated cable guide (11) and the cable aperture (12).

6 Operation

6.1 Charging



1. Ensure that the handheld vacuum cleaner is switched off before every charge.
2. Connect the mains charger to the power supply.
3. Place the handheld vacuum cleaner onto the charging unit (4).
4. If you want to charge the handheld vacuum cleaner using the cable rather than the charging unit, firmly press the pin (a) on the charging unit to open it.
5. Insert the small plug (b) on the mains charger into the corresponding jack on the handle of the handheld vacuum cleaner.
6. Then plug the mains charger into the power socket.



6.2 Switching on and off

- Press the green button (8) to switch the handheld vacuum cleaner on and off.

6.3 Boost function

1. Hold down the green button (8) to activate the boost function.
2. Release the green button (8) to return to normal mode.

6.4 Function indicator

Function indicator (7)	Status
Off	Off or finished charging
On	Normal operation or boost function
Flashes briefly	Please recharge
Pulsates	Charging in progress
Flashes quickly	Fault

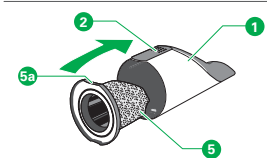
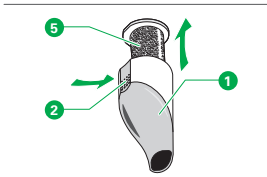
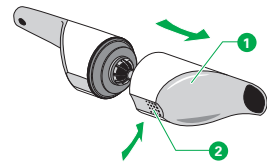
6.5 Storage

The handheld vacuum cleaner can remain in the charging unit.

Note If you are not going to use the handheld vacuum cleaner for a long period of time, unplug the mains charger from the power socket.

7 Maintenance

7.1 Cleaning the filter



1. Press the release key (2) and remove the dust chamber from the device.
2. Hold the dust chamber with the nozzle pointing downwards.
3. Press the release key (2) again and remove the filter unit (5) from the dust chamber.
4. Empty the contents of the dust chamber (1) into a bin.
5. If necessary, clean the dust chamber with a damp cloth and allow the dust chamber to dry completely before reassembling.
6. When inserting the filter unit (5), make sure that the indentation (5a) on the rim of the filter unit is aligned with the release key (2) on the dust chamber (1).
7. Hold down the release key and push the filter unit into the dust chamber as far as it will go.

8 Troubleshooting

Detailed information on troubleshooting can be found at www.vorwerk.com.

9 Disposal

9.1 Disposal



This symbol means that electrical and electronic appliances may not be disposed of in the normal household waste. Old electronic appliances can be returned to municipal collection points for free.

The law states that as owner of an old electrical or electronic device you are not allowed (under DIRECTIVE 2012/19/EU OF THE EUROPEAN PARLIAMENT AND OF THE COUNCIL of 4 July 2012 on Waste Electric and Electronic Equipment, and the reformed German Electrical and Electronic Equipment Act (ElektroG) of 20 October 2015) to dispose of this device or its electrical/electronic accessories via unsorted domestic waste.

- Use the return options provided free of charge instead.
- Contact your city or municipal administration for more information.

9.2 Information on the disposal of the batteries

The following information is intended for the disposal company and not for you as the customer.

The integrated lithium-ion batteries contain substances that can be harmful to the environment. Before scrapping the device, the batteries must be removed and taken to a battery collection centre.

- Only remove the batteries when they are fully discharged. The batteries must not come into contact with metal under any circumstances.

CAUTION



Risk of injury from leaking batteries!

Leaking batteries could cause injury.

- Leaking batteries must not come into contact with the eyes or mucous membranes.
- Wash your hands and rinse your eyes with clean water.
- If irritation persists, seek medical attention.

Removing the batteries from the device

1. Remove the handheld vacuum cleaner from the charging unit.
2. Let the handheld vacuum cleaner run until it comes to a complete stop and cannot be switched on again.
3. Open the handheld vacuum cleaner and remove the cover.
4. Remove the four screws.
5. Remove the motor block with the batteries.
6. Disconnect each connecting wire individually and take out the batteries.

10 Warranty

Any warranty services can be found in the order note or purchase contract.

11 Service

Either in person with your customer representative or at the Customer Services.

www.vorwerk.co.uk

12 Technical data

Kobold VC100 Handheld Vacuum Cleaner

Safety symbols



Housing	High-quality, recyclable, thermoformed plastic
Motor	Maintenance-free DC motor, approx. 23,000 rpm
Input voltage mains charger	220 – 240 volts alternating current 50/60 Hertz
Output voltage mains charger	10.8 V DC
Mains charger type	British integrated plug: S006BAB1080050 European integrated plug: S006BAV1080050
Nominal output of the motor	approx. 65 watts
Maximum suction power	13 watts
Maximum volume flow	15 l/s
Weight	650 g (without charging unit and mains charger)
Dimensions	Length (with wall mount): 425 mm Length (vacuum cleaner): 417 mm Diameter: 82 mm
Noise emission	75 dBA (measured under free-field conditions on workbench)
Battery pack	Lithium ion

Kobold VC100 Handheld Vacuum Cleaner

Running times Normal mode: approx. 20 minutes
 Boost: approx. 12 minutes

Charging time approx. 4.5 h

Mains charger

Output current max. 0.5 A

Output power max. 5.4 W

Average efficiency rate 79.60 %

Efficiency at low load (10%) 68.01 %

No-Load Power consumption 0.073 W

12.1 Manufacturer

Vorwerk Elektrowerke GmbH & Co. KG

Mühlenweg 17-37

42270 Wuppertal

Germany

kobold

VC100

